

## Parts and Service Manual

# BURNISHER

**MODEL:** MR2000-115, MR1500-115, MR2000-220, MR1500-220



## TABLE OF CONTENTS

|                                                             |     |
|-------------------------------------------------------------|-----|
| RECEIVING YOUR EQUIPMENT.....                               | 3   |
| WARNINGS AND SAFETY.....                                    | 3   |
| ELECTRICAL INFORMATION.....                                 | 4   |
| GROUNDING INSTRUCTIONS.....                                 | 4   |
| MAINTENANCE.....                                            | 5   |
| CORD STORAGE AND SAFETY.....                                | 5   |
| CLEANUP AND STORAGE.....                                    | 5   |
| PAD INSTALLATION.....                                       | 5   |
| MACHINE OPERATION.....                                      | 5,6 |
| MANEUVERING THE MACHINE.....                                | 6   |
| ADJUSTMENTS.....                                            | 6   |
| SERVICING.....                                              | 6   |
| WIRING DIAGRAM.....                                         | 7   |
| HANDLE SCHEMATIC (ALL MODELS LISTED).....                   | 8   |
| HANDLE SCHEMATIC LIST (ALL MODELS LISTED).....              | 9   |
| LOWER ASSEMBLY SCHEMATIC (MR1500-115, MR2000-115).....      | 10  |
| LOWER ASSEMBLY SCHEMATIC LIST (MR1500-115, MR2000-115)..... | 11  |
| LOWER ASSEMBLY SCHEMATIC (MR1500-220, MR2000-220).....      | 12  |
| LOWER ASSEMBLY SCHEMATIC LIST (MR1500-220, MR2000-220)..... | 13  |
| WARRANTY CARD.....                                          | 14  |

## UNPACKING YOUR NEW BURNISHER:

When your package is delivered, check the carton carefully for signs of rough handling. If your BURNISHER is damaged, notify the carrier immediately and request an inspection. Be sure to keep the carton, packing inserts, packing lists and carrier's receipt until the inspector has verified your claim.

MINUTEMAN's liability ceases when the carrier picks up the shipment. However, our customer service staff will be happy to furnish any information needed in connection with the claim and will attempt to expedite a resolution.



## PLEASE READ BEFORE OPERATING YOUR NEW BURNISHER:

Read the manual carefully and completely before attempting to operate the unit. This manual has important information for the use and safe operation of the machine. Keep this manual handy at all times.

This equipment has been engineered and manufactured to provide excellent performance and service. To ensure that your equipment will continue to perform as intended:

- Maintain equipment regularly- following the suggested maintenance schedule provided.
- Use only original MINUTEMAN parts when servicing.
- Operate equipment with care.

If additional information is needed, please contact:  
**MINUTEMAN INTERNATIONAL**  
**630- 627-6900**

All information and specifications printed in the manual are current at the time of printing; however because of MINUTEMAN's policy of continual product development, we reserve the right to make changes at any time without notice.

## FAILURE TO COMPLY WITH THE FOLLOWING WARNINGS AND INSTRUCTIONS WILL VOID THE WARRANTY.

### WARNING!

- Do not operate the machine unless trained and authorized.
- Do not allow children or untrained adults to operate this machine.
- Do not leave the machine when plugged in. Unplug from the outlet when not in use, before servicing, and when changing the brushes or pads.
- Use indoors only.
- Do not allow to be used as a toy. Close attention is necessary when used by or near children.
- Do not bypass or defeat the safety "lock-out lever."
- The machine was designed for use as per instruction and recommendations written in this manual.
- Any deviation from its proper use or purpose and the consequential damage that may occur is the sole responsibility of the end user.
- Do not use with damaged cord or plug. If the machine is not working as it should, or it has been dropped, damaged, left outdoors or dropped into water, return it to an authorized service center.
- Do not pull or carry by cord, use cord as handle, close a door on the cord or pull cord around sharp edges or corners. Do not run machine over cord. Keep cord away from heated surfaces.
- Do not unplug by pulling on cord. To unplug, grasp the plug, not the cord.
- Do not handle plug or appliance with wet hands.
- Make sure the machine is plugged into an electrical outlet with the same voltage and frequency rating as shown on the nameplate of the machine. Do not attempt to plug a 115- volt machine into a 230- volt outlet.
- Do not immerse or use this machine in standing water. Such use can cause electric shock.
- Keep the electrical supply cord from contacting the rotating brush or drive block.
- Do not expose machine to freezing temperatures.
- To avoid electric shock, do not expose the unit to rain.

Store indoors only.

- Connect to a properly grounded outlet only. See “Grounding Instructions.”
- Turn off all controls before unplugging.
- When using an extension cord, use a 3 conductor grounding cord, 12 gauge wire or heavier.
- Do not put any object into openings. Do not use with any opening blocked. Keep free of dust, lint, hair and anything that may reduce air flow.
- Do not operate machine in flammable or explosive areas.
- All servicing of MINUTEMAN’s equipment should be performed by a MINUTEMAN authorized service center.
- Keep hair, loose clothing, fingers and all parts of body away from openings and moving parts.
- Use extra care when cleaning near stairs.
- To reduce the risk of fire use only commercially available floor cleaners and waxes intended for machine application.
- Risk of explosion - Electrical motors and components can cause an explosion when operated near volatile materials and vapors. Do not use this machine near flammable materials such as solvents, thinners, fuels, grain dust, etc.



### **ELECTRICAL - 115 Volt**

**Model: MR2000-115, MR1500-115**

This machine is designed to operate on a standard 15 amp, 120 volt, 60 Hz, AC circuit. Voltages below 105 volt AC or above 125 volts AC could cause serious damage to the motor.

### **ELECTRICAL - 240 Volt**

**Model: MR2000-220, MR1500-220**

This machine is designed to operate on a standard 8.3 amp type L fused 230 volt, 50 Hz, AC circuit. Voltages below 200 volt AC or above 250 volts AC could cause serious damage to the motor.

### **GROUNDING INSTRUCTIONS:**

This piece of equipment must be grounded. Should an electrical malfunction occur, grounding provides a path of least resistance for electrical current- reducing the risk of electric shock. This piece of equipment is furnished with a cord that has a grounding conductor and grounding plug. The grounded plug must only be plugged into an appropriate outlet that is properly installed and grounded in accordance with all local codes and ordinances.

### **WARNING:**

Connecting the equipment to an improperly grounded outlet can result in an increased risk of electric shock. A qualified electrician should be consulted if you are unsure that the outlet is properly grounded. Do not modify the plug provided with the equipment. If it will not fit the outlet, have a proper outlet installed by a qualified electrician.

This appliance is designed for use on a 120-volt circuit. The grounding plug provided looks like the plug illustrated in Figure 1. Replace the power cord if the grounding pin is damaged or broken.

Extension cords connected to this machine should be 12 gauge, three-wire cords with three-prong plugs and outlets. **DO NOT** use extension cords more than 25 feet (7.6 m) long

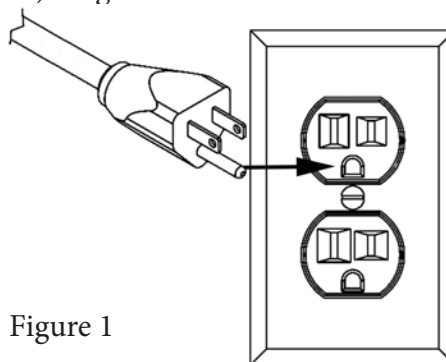


Figure 1

## MAINTENANCE:

This BURNISHER has been engineered and built to require minimum maintenance. But like any machine, it does require some care to keep it in optimum working condition. Careful attention to these maintenance instructions will give you maximum operating performance and life expectancy of the machine.

**CAUTION:** Disconnect the power cord from the outlet before doing any clean up or maintenance on the machine

1. Keep the machine clean. Do not allow dust to accumulate on external surfaces, the motor, or near any moving parts.
2. After every job, wipe down the surface of the machine with a clean damp cloth.
3. Inspect cord for damage. Do not use machine with a damaged cord.

## CORD STORAGE:

While not in use, storage can be accomplished by winding cord around handle assy. Cord should be completely unwound during operation.

## CORD SAFETY

- Do not leave appliance when plugged in. Unplug from outlet when not in use and before servicing
- Do not use with damaged cord or plug. If appliance is not working as it should, has been dropped, damaged, left outdoors, or dropped into water, return to service center for inspection and repair.
- Do not pull or carry by cord, use cord as handle, close a door on cord, or pull cord around sharp edges or corners. Do not run this BURNISHER over cord. Keep cord away from heated surfaces.
- Do not unplug by pulling cord. To unplug, grasp the plug, not the cord.
- Do not handle plug or appliance with wet hands.
- Always unplug the machine when removing brush.
- This equipment should be stored indoors and not exposed to rain.

## CLEAN UP & STORAGE

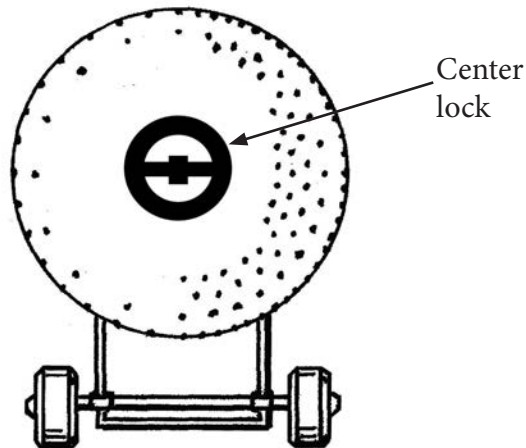
1. Unplug and wrap it under the cord hook and around the left side handle grip. Clean the cord and inspect it for cuts, gashes and loose prongs.
2. Wipe down the machine and store in clean dry place.

**WARNING:** Do not store the machine with the drive block, pad driver or brush on the machine.

## PAD INSTALLATION:

1. To install pad, tilt the machine back on the rear wheels until machine is resting on handle.
2. Center the pad on the pad holder and insert pad center lock by twisting clockwise. Make sure the center lock is tight.

To remove: Twist the center lock counterclockwise



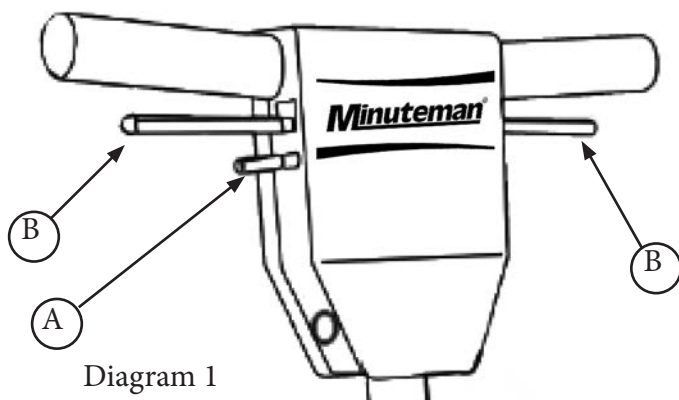
## MACHINE OPERATION:

This equipment is equipped with a trigger safety interlock. Refer to Diagram 1 for steps 5, 6, and 7.

1. Install the pad driver and pad or attachment.
2. Plug in machine.
3. Adjust the handle to the desired operating position.
4. Lean the machine back, with all four wheels on the floor, so the pad is not making contact with the floor when you turn the motor on.
5. Place both hands on the handle grips with your fingers around the on/off lever (Refer to B on Diagram 1) Which extends from one side to the other, under-

neath the handle grips.

6. The safety “lock-out” lever (Refer to A on Diagram 1) is located underneath the right side handle grip and switch lever. To unlock the “lock-out” lever, use your right hand fore finger to press the lever down toward the back of the switch box.
7. With trigger safety interlock in the unlocked position, Pull up on either side of the ON/OFF lever (Refer to B on Diagram 1) to power the motor. Pull up on only one side of the ON/OFF lever.
8. Once the motor is at full speed, carefully lower the pad onto the floor.

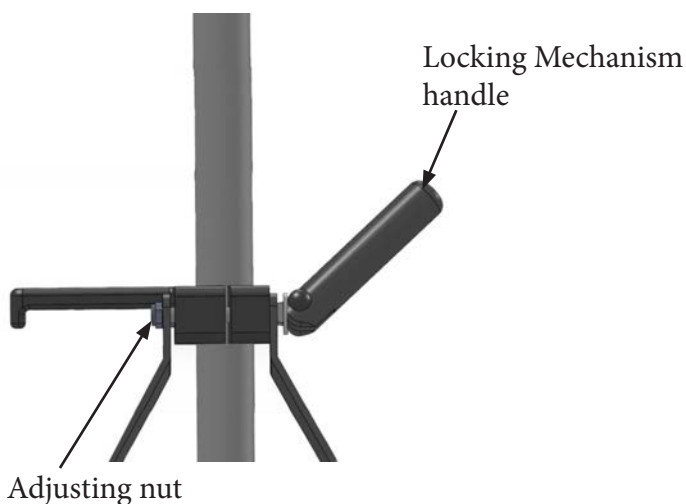


### TO MANEUVER THE MACHINE

1. Raise the handle slightly and the machine will go to the right. The higher you raise it, the faster it will go.
2. Lower the handle and the machine will go left. The more you lower it, the faster it will go.
3. Practice on a smooth surface until you gain experience in operating the unit.

### TO ADJUST THE HANDLE-LOCK MECHANISM:

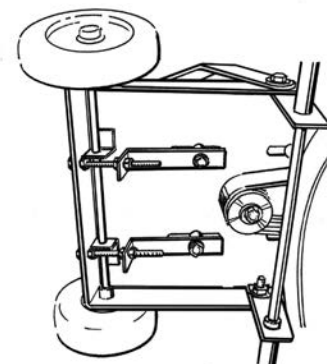
1. Unlock the handle and place it in the upright position.
2. Tighten the adjusting nut until there is just a slight drag when the handle is raised or lowered. Do not overtighten.
3. Place the handle grip into the down (locked) position to check for proper locking function.



### TO ADJUST A DRIVE BELT

1. Loosen, but do not remove the 4 bolts, that hold the motor to the frame.
2. Tighten the 2 screws at the back of the frame until the belt is tight.
3. Test and re-adjust the belt until the belt does not slip. Re-tighten the four motor bolts.

### WARNING: DO NOT OVER-TIGHTEN THE BELT



### SERVICING:

In the event that your BURNISHER requires service, please contact MINUTEMAN:

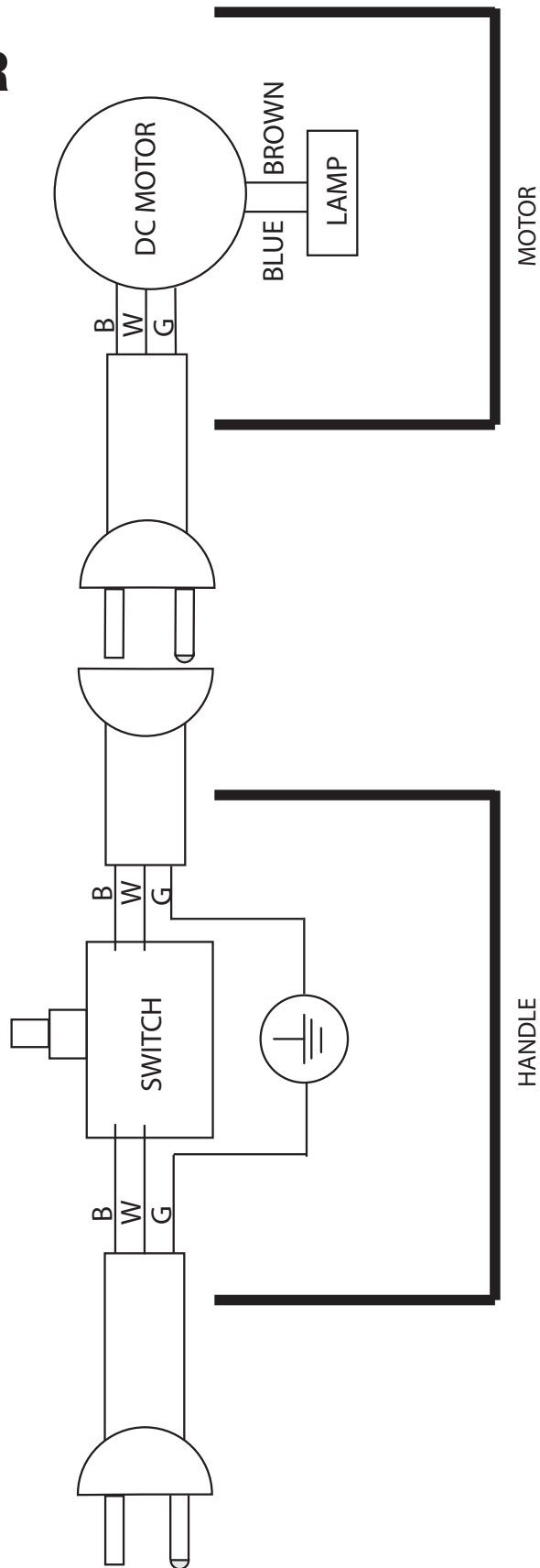
**USA Phone 630- 627-6900 • Fax 630- 627-1130**

**[www.minutemanintl.com](http://www.minutemanintl.com)**

No user serviceable components are employed in this equipment. Do not attempt repairs yourself. MINUTEMAN will assist you in locating an independent service contractor.

# WIRING FOR MODELS:

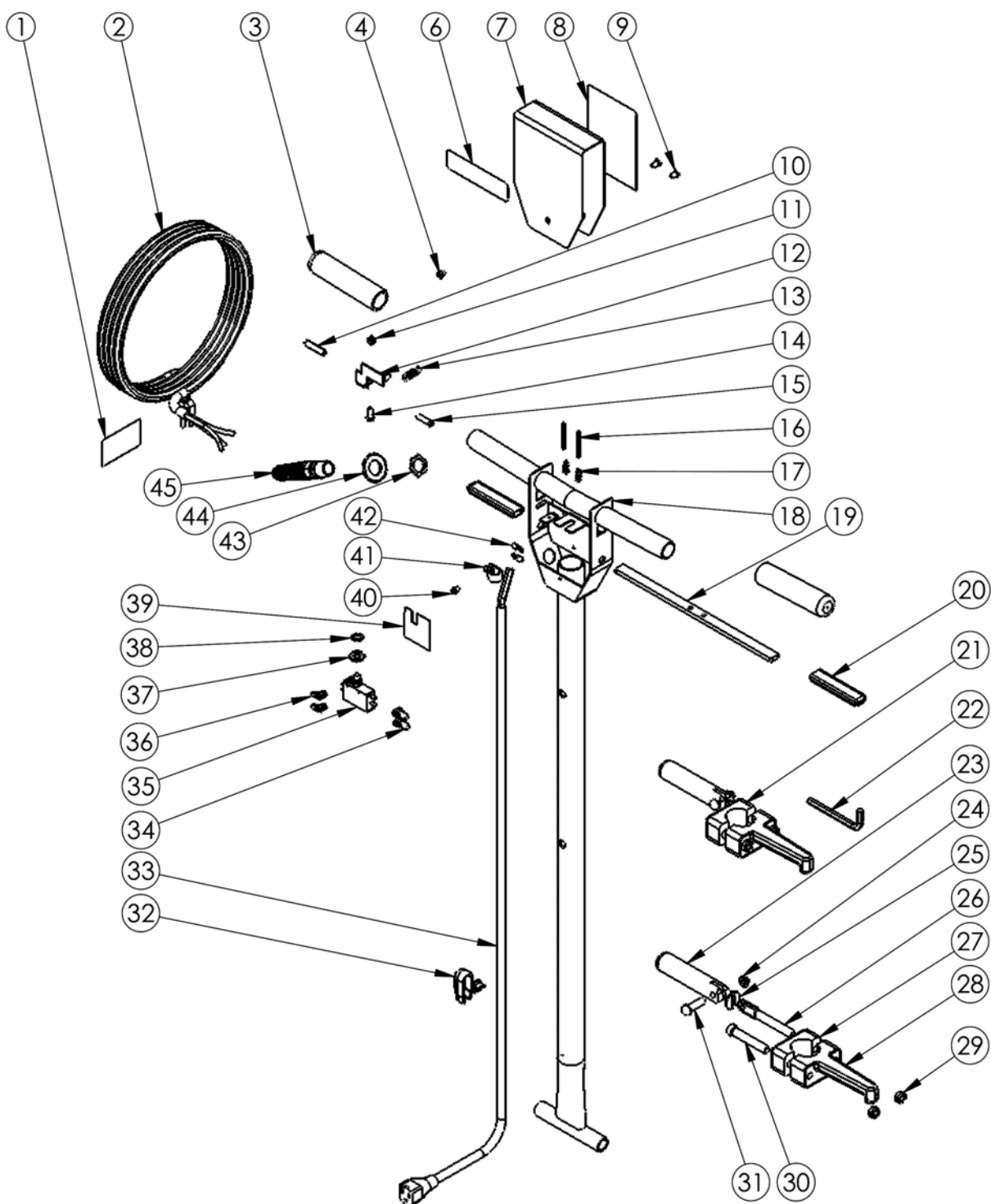
MR2000-115,  
MR1500-115  
MR2000-220,  
MR1500-220





## HANDLE FOR MODELS:

MR2000-115, MR1500-115, MR2000-220, MR1500-220





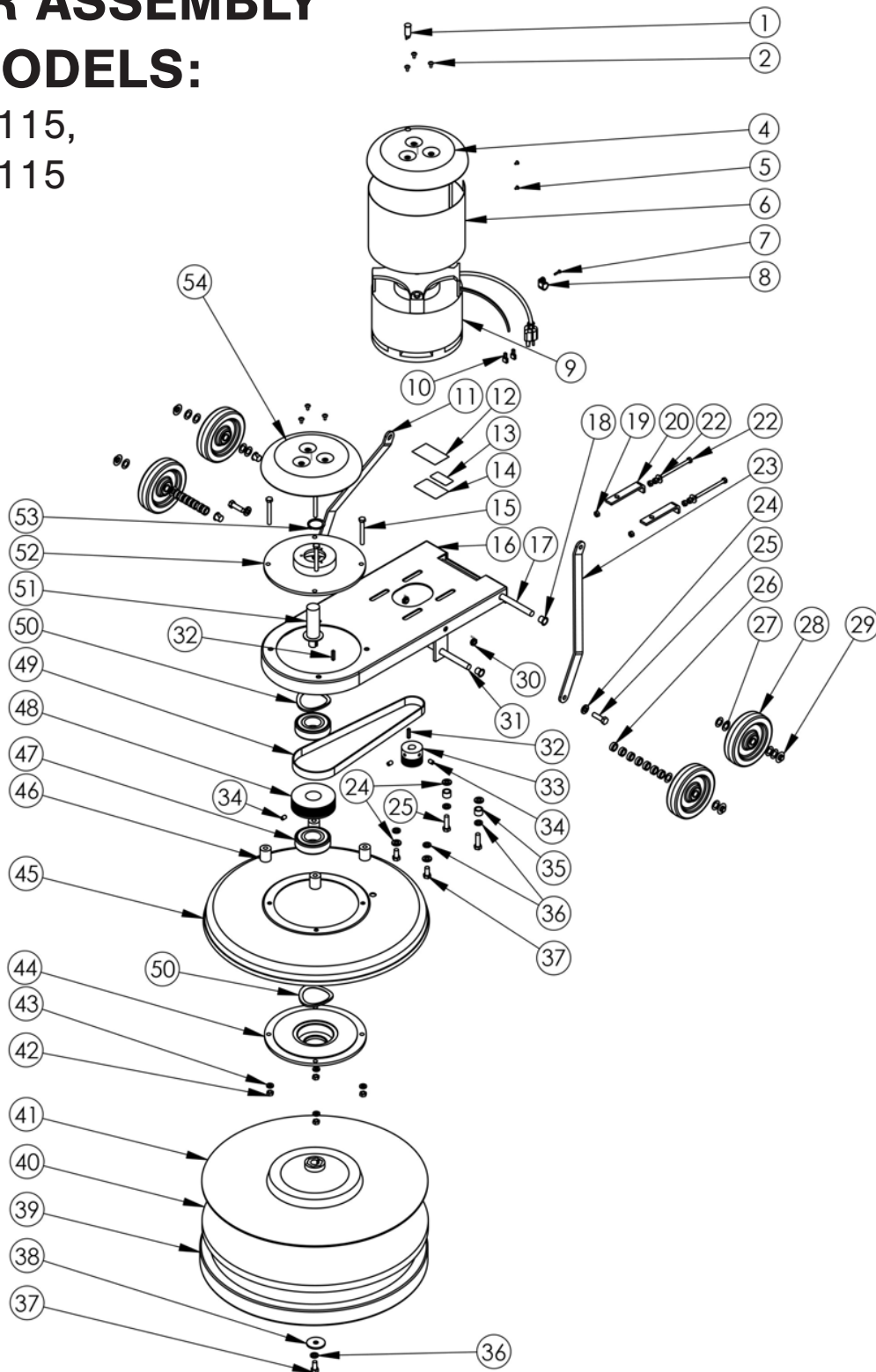
# HANDLE FOR MODELS:

MR2000-115, MR1500-115, MR2000-220, MR1500-220

| ITEM NO. | PART NUMBER                                         | DESCRIPTION | QTY. |
|----------|-----------------------------------------------------|-------------|------|
| 1        | H02548-2 Label, Important, Cord                     |             | 1    |
| 2        | B11900 Power Cord, 12-3, 75 FT, SJTW                |             | 1    |
| 3        | K11498 Grip                                         |             | 2    |
| 4        | C11528 Screw, 10-32 X .25 in                        |             | 1    |
|          |                                                     |             | 1    |
| 6        | H13699 MINUTEMAN Label                              |             | 1    |
| 7        | D11496B Switch Box Cover, Black                     |             | 1    |
| 8        | H11493 Label, Safety, Floor Machine                 |             | 1    |
| 9        | C11529 Screw, 10-32 X .375 in                       |             | 2    |
| 10       | K11519 Lever Grip, Lockout, Black                   |             | 1    |
| 11       | C00278 Locknut, 10-32, Nylon, SS                    |             | 1    |
| 12       | D11494 Lockout Bracket                              |             | 1    |
| 13       | D11524 Spring, Lockout                              |             | 1    |
| 14       | C90007 Screw, 10-32 X .625 Phillips, Truss Head, SS |             | 1    |
| 15       | C11491 Screw, 10-32 X 1 in, SS                      |             | 1    |
| 16       | C00306 Roll Pin, .125 X 1.75                        |             | 2    |
| 17       | D11523 Spring, Trigger                              |             | 2    |
| 18       | D11479 Handle, Chrome, Floormachine                 |             | 1    |
| 19       | D11495 Trigger, Zinc Plated                         |             | 1    |
| 20       | K11520 Lever Grip, Trigger, Black                   |             | 2    |
| 21       | I1507A Assembled Locking Handle, Cord Hook          |             | 1    |
| 22       | C11619 Allen Wrench, .31 in                         |             | 1    |
| 23       | D11497 Handle, Locking Clamp                        |             | 1    |
| 24       | C11538 Cap Nut, .31 in, Push-On                     |             | 1    |
| 25       | C00259 Washer, Slotted, Zinc                        |             | 1    |
| 26       | C11536 Spade Bolt, .375-16 X 4 in                   |             | 1    |
| 27       | D11507 Cord Hook Clamp                              |             | 1    |
| 28       | D11507-2 Cord Hook Body                             |             | 1    |
| 29       | C11558 Locknut, Black Oxide, Thin                   |             | 2    |
| 30       | C11502 Socket Cap Screw, .375-16 X 2.5 in           |             | 1    |
| 31       | C11537 Dowel Pin, .31 X 1.5 in                      |             | 1    |
| 32       | B10734 Strain Relief, Handle                        |             | 1    |
| 33       | B11513 Cord, Handle, 14-3 SJTW                      |             | 1    |
| 34       | B11762 Terminal Lug, Nylon, Female                  |             | 2    |
| 35       | B11465 Switch, DPST, Pushbutton                     |             | 1    |
| 36       | B00177 Terminal Lug, Female, QD, .25 X .032         |             | 2    |
| 37       | C00252 Washer, .375 in, Flat                        |             | 1    |
| 38       | C11541 Washer, .375 in, Star                        |             | 1    |
| 39       | B11518 Switch Insulation                            |             | 1    |
| 40       | C00284 Screw, 10-32 X .375 Ground                   |             | 1    |
| 41       | B00187 Cable Clamp, Nylon, .43 in.                  |             | 1    |
| 42       | B00180-10-3 Ring Terminal, #10 Center               |             | 2    |
| 43       | B11505 Strain Relief Nut, Metal                     |             | 1    |
| 44       | C11560 Washer, .93 ID X 1.5 OD                      |             | 1    |
| 45       | B11504 Strain Relief, Metal                         |             | 1    |

# LOWER ASSEMBLY FOR MODELS:

MR2000-115,  
MR1500-115

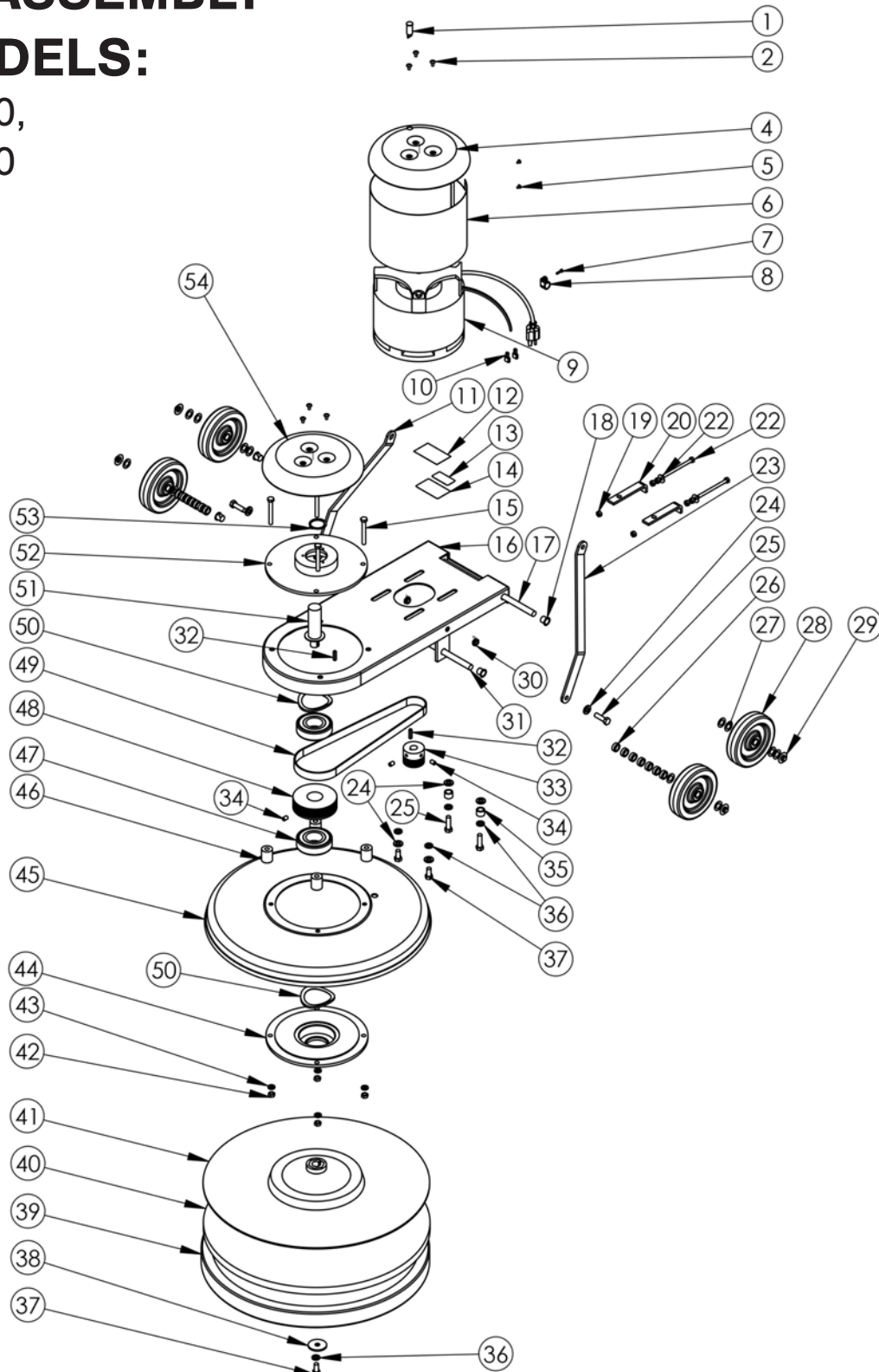


# **LOWER ASSEMBLY FOR MODELS:** **MR2000-115, MR1500-115**

| ITEM NO. | PART NUMBER | DESCRIPTION                                                      | QTY. |
|----------|-------------|------------------------------------------------------------------|------|
| 1        | B02196-1    | Light, Motor Carbon Brush Wear                                   | 1    |
| 2        | C11916      | Screw, 10-32 X .375 Phillips                                     | 6    |
|          |             |                                                                  | 1    |
| 4        | D11490B     | -H Drip Cover, w-Hole for Green Light                            | 1    |
| 5        | C00297      | Screw, #8 X .25 in, Pan Head                                     | 2    |
| 6        | D11545      | Motor Screen                                                     | 1    |
| 7        | C00293      | #8 X .5in Pan, Black SMS, Phillips                               | 1    |
| 8        | B00187      | Cable Clamp, Nylon, .43 in.                                      | 1    |
| 9        | G11557      | Motor, High Speed                                                | 1    |
| 10       | B00177      | Terminal Lug, Female, QD, .25 X .032, 16-14 AWG, Fully Insulated | 2    |
| 11       | D11543      | Handle Brace, Left                                               | 1    |
| 12       | H03545      | Cover, Serial # Label                                            | 1    |
| 13       | H10976-1    | Label, UL STD 561-507                                            | 1    |
| 14       | H00565-5    | Label, Serial #, Standard                                        | 1    |
| 15       | C11568      | Hex Bolt, .31- 18 X 2.5 in                                       | 4    |
| 16       | D11526      | Frame, Motor, Black                                              | 1    |
| 17       | D11563      | Axle, Handle                                                     | 1    |
| 18       | K00674      | Bushing, .50 in, Nylon                                           | 4    |
| 19       | C00261      | Nut, .25-20, Hex                                                 | 6    |
| 20       | D11542      | Tension Adjustment Bracket                                       | 2    |
| 21       | C00233      | Washer, Flat, .25 in                                             | 2    |
| 22       | C00319      | Hex Tap Bolt, 1-4 X 20 X 3.5 in                                  | 2    |
| 23       | D11544      | Handle Brace, Right                                              | 1    |
| 24       | C00252      | Washer, .375 in, Flat                                            | 6    |
| 25       | C11569      | Hex Tap Bolt, 3-8 X 1.25 in                                      | 4    |
| 26       | K11561      | Spacer, .25 lg, Nylon, Natural                                   | 14   |
| 27       | C11559      | Washer, .515 X .875 X .032                                       | 12   |
| 28       | G11943      | Wheel, 5 in Saturn                                               | 4    |
| 29       | C02305      | Cap Nut, .5in Push-on                                            | 4    |
| 30       | C11558      | Locknut, .375-16                                                 | 2    |
| 31       | D11562      | Axle, Wheel                                                      | 1    |
| 32       | C11555      | Key, Motor, .187 in                                              | 2    |
| 33       | D11532      | Pulley                                                           | 1    |
| 34       | C11567      | Set Screw, .312 in                                               | 3    |
| 35       | K00662-50   | Spacer, .5 in                                                    | 2    |
| 36       | C00250      | Lockwasher, .375, Split                                          | 5    |
| 37       | C11571      | Hex Tap Bolt, 3-8 X .75 in                                       | 3    |
| 38       | D11535      | Washer, 1.75 in, Steel                                           | 1    |
| 39       | E11478      | Bumper, 20 in Floor Machine                                      | 1    |
| 40       | F11988      | Pad, Hi Speed, 20 in                                             | 1    |
| 41       | 2004BR      | Pad holder, 20 in, High Speed                                    | 1    |
| 42       | C00262      | Nut, .31-18, Hex                                                 | 4    |
| 43       | C00251      | Lockwasher, .31, Split                                           | 4    |
| 44       | D11565      | Bearing Plate, Lower                                             | 1    |
| 45       | D11486B     | Brush Cover, 20 in, Black                                        | 1    |
| 46       | K11521      | Spacer, Base, Floor Machine                                      | 4    |
| 47       | G11531      | Bearing                                                          | 2    |
| 48       | D11547      | Pulley, 3.875 in (1500RPM), D11533 Pulley, 3.125" (2000RPM)      | 1    |
| 49       | L11530      | Belt                                                             | 1    |
| 50       | C11556      | Wave Washer                                                      | 2    |
| 51       | D11534      | Shaft, 4.11 in                                                   | 1    |
| 52       | D11566      | Bearing Plate, Upper                                             | 1    |
| 53       | C11574      | Retaining Ring                                                   | 1    |
| 54       | D11490B     | Drip Cover, Black                                                | 1    |

# LOWER ASSEMBLY FOR MODELS:

MR2000-220,  
MR1500-220



# **LOWER ASSEMBLY FOR MODELS:** **MR2000-220, MR1500-220**

| ITEM NO. | PART NUMBER                                                             | DESCRIPTION | QTY. |
|----------|-------------------------------------------------------------------------|-------------|------|
| 1        | B02196-1 Light, Motor Carbon Brush Wear                                 |             | 1    |
| 2        | C11916 Screw, 10-32 X .375 Phillips                                     |             | 6    |
|          |                                                                         |             | 1    |
| 4        | D11490B-H Drip Cover, w-Hole for Green Light                            |             | 1    |
| 5        | C00297 Screw, #8 X .25 in, Pan Head                                     |             | 2    |
| 6        | D11545 Motor Screen                                                     |             | 1    |
| 7        | C00293 #8 X .5in Pan, Black SMS, Phillips                               |             | 1    |
| 8        | B00187 Cable Clamp, Nylon, .43 in.                                      |             | 1    |
| 9        | G11744 High Speed motor, 220v                                           |             | 1    |
| 10       | B00177 Terminal Lug, Female, QD, .25 X .032, 16-14 AWG, Fully Insulated |             | 2    |
| 11       | D11543 Handle Brace, Left                                               |             | 1    |
| 12       | H03545 Cover, Serial # Label                                            |             | 1    |
| 13       | H10976-1 Label, UL STD 561-507                                          |             | 1    |
| 14       | H00565-5 Label, Serial #, Standard                                      |             | 1    |
| 15       | C11568 Hex Bolt, .31- 18 X 2.5 in                                       |             | 4    |
| 16       | D11526 Frame, Motor, Black                                              |             | 1    |
| 17       | D11563 Axle, Handle                                                     |             | 1    |
| 18       | K00674 Bushing, .50 in, Nylon                                           |             | 4    |
| 19       | C00261 Nut, .25-20, Hex                                                 |             | 6    |
| 20       | D11542 Tension Adjustment Bracket                                       |             | 2    |
| 21       | C00233 Washer, Flat, .25 in                                             |             | 2    |
| 22       | C00319 Hex Tap Bolt, 1-4 X 20 X 3.5 in                                  |             | 2    |
| 23       | D11544 Handle Brace, Right                                              |             | 1    |
| 24       | C00252 Washer, .375 in, Flat                                            |             | 6    |
| 25       | C11569 Hex Tap Bolt, 3-8 X 1.25 in                                      |             | 4    |
| 26       | K11561 Spacer, .25 lg, Nylon, Natural                                   |             | 14   |
| 27       | C11559 Washer, .515 X .875 X .032                                       |             | 12   |
| 28       | G11943 Wheel, 5 in Saturn                                               |             | 4    |
| 29       | C02305 Cap Nut, .5in Push-on                                            |             | 4    |
| 30       | C11558 Locknut, .375-16                                                 |             | 2    |
| 31       | D11562 Axle, Wheel                                                      |             | 1    |
| 32       | C11555 Key, Motor, .187 in                                              |             | 2    |
| 33       | D11532 Pulley                                                           |             | 1    |
| 34       | C11567 Set Screw, .312 in                                               |             | 3    |
| 35       | K00662-50 Spacer, .5 in                                                 |             | 2    |
| 36       | C00250 Lockwasher, .375, Split                                          |             | 5    |
| 37       | C11571 Hex Tap Bolt, 3-8 X .75 in                                       |             | 3    |
| 38       | D11535 Washer, 1.75 in, Steel                                           |             | 1    |
| 39       | E11478 Bumper, 20 in Floor Machine                                      |             | 1    |
| 40       | F11988 Pad, Hi Speed, 20 in                                             |             | 1    |
| 41       | 2004BR Pad holder, 20 in, High Speed                                    |             | 1    |
| 42       | C00262 Nut, .31-18, Hex                                                 |             | 4    |
| 43       | C00251 Lockwasher, .31, Split                                           |             | 4    |
| 44       | D11565 Bearing Plate, Lower                                             |             | 1    |
| 45       | D11486B Brush Cover, 20 in, Black                                       |             | 1    |
| 46       | K11521 Spacer, Base, Floor Machine                                      |             | 4    |
| 47       | G11531 Bearing                                                          |             | 2    |
| 48       | D11547 Pulley, 3.875 in (1500RPM) , D11533 Pulley, 3.125" (2000RPM)     |             | 1    |
| 49       | L11530 Belt                                                             |             | 1    |
| 50       | C11556 Wave Washer                                                      |             | 2    |
| 51       | D11534 Shaft, 4.11 in                                                   |             | 1    |
| 52       | D11566 Bearing Plate, Upper                                             |             | 1    |
| 53       | C11574 Retaining Ring                                                   |             | 1    |
| 54       | D11490B Drip Cover, Black                                               |             | 1    |



# Minuteman International Made Simple Commercial Limited Warranty

REVISION N EFFECTIVE 9/3/2015

Minuteman International, Inc. warrants to the original purchaser/user that the product is free from defects in workmanship and materials under normal use. Minuteman will, at its option, repair or replace without charge, parts that fail under normal use and service when operated and maintained in accordance with the applicable operation and instruction manuals. All warranty claims must be submitted through and approved by factory authorized repair stations.

This warranty does not apply to normal wear, or to items whose life is dependent on their use and care, such as belts, cords, switches, hoses, rubber parts, electrical motor components or adjustments. Parts manufactured by Minuteman are covered by and subject to the warranties and/or guarantees of their manufacturers. Please contact Minuteman for procedures in warranty claims against these manufacturers.

**Special warning to purchaser** -- Use of replacement filters and/or pre-filters not manufactured by Minuteman or its designated licensees, will void all warranties expressed or implied. A potential health hazard exists without original equipment replacement.

All warranted items become the sole property of Minuteman or its original manufacturer, whichever the case may be.

Minuteman disclaims any implied warranty, including the warranty of merchantability and the warranty of fitness for a particular purpose. Minuteman assumes no responsibility for any special, incidental or consequential damages.

This limited warranty is applicable only in the U.S.A. and Canada, and is extended only to the original user/purchaser of this product. Customers outside the U.S.A. and Canada should contact their local distributor for export warranty policies. Minuteman is not responsible for costs or repairs performed by persons other than those specifically authorized by Minuteman. This warranty does not apply to damage from transportation, alterations by unauthorized persons, misuse or abuse of the equipment, use of non-compatible chemicals, or damage to property, or loss of income due to malfunctions of the product.

If a difficulty develops with this machine, you should contact the dealer from whom it was purchased.

This warranty gives you specific legal rights, and you may have other rights which vary from state to state. Some states do not allow the exclusion or limitation of special, incidental or consequential damages, or limitations on how long an implied warranty lasts, so the above exclusions and limitations may not apply to you.

| Model               | Parts | Labor | Poly | Travel                  |
|---------------------|-------|-------|------|-------------------------|
| Cord Electric Group | 3yrs  | 2yrs  | 0    | 90 days                 |
|                     |       |       |      | Not to exceed two hours |

Exceptions.....

| Model                                                        | Parts | Labor   | Poly  | Travel                  |
|--------------------------------------------------------------|-------|---------|-------|-------------------------|
| Port A Scrub, all models                                     | 1yr   | 6months | 10yrs | 90 days                 |
| Rapid Air Blower/A3S                                         | 1yr   | 1yr     | 10yrs | 0                       |
| Phenom Dual Motor Upright Vacuums                            | 1yr   | 1yr     | 0     | 0                       |
| Explosion Proof Vacuum                                       | 1yr   | 1yr     | 0     | 0                       |
| Box Extractors, Floor Machines, Burnishers, Restroom Cleaner | 2yr   | 1yr     | 10yrs | 0                       |
| E17 & E20 Electric Scrubbers                                 | 3yr   | 2yr     | 10yrs | 90 days                 |
|                                                              |       |         |       | Not to exceed two hours |

| Description               | Parts | Labor | Poly | Travel                  |
|---------------------------|-------|-------|------|-------------------------|
| Battery Operated Group    | 3yrs  | 2yrs  | 10   | 90 days                 |
| Sweepers                  | 1yr   | 1yr   | 0    | 90 days                 |
| Internal Combustion Group | 1yr   | 1yr   | 0    | 90 days                 |
|                           |       |       |      | Not to exceed two hours |

|                                     |                                                   |
|-------------------------------------|---------------------------------------------------|
| <b>Battery Chargers:</b>            | One year replacement                              |
| <b>Replacement Parts:</b>           | Ninety days                                       |
| <b>Batteries:</b>                   | 0-3 months full replacement, 4-12 months pro-rate |
| <b>Polypropylene Plastic Tanks:</b> | 10yr warranty, no additional labor                |



# NOTES

---



# “Excellence Meets Clean”

Minuteman International • 14N845 U.S. Route 20 • Pingree Grove, Illinois 60140

USA Phone 630- 627-6900 • Fax 630- 627-1130

E-Mail: [tech@minutemanintl.com](mailto:tech@minutemanintl.com)

Website [www.minutemanintl.com](http://www.minutemanintl.com)

A Member of the Hako Group