

**X705 Series Air  
Operated H.E.P.A.  
Vacuum 15, & 55  
Gallon Units**

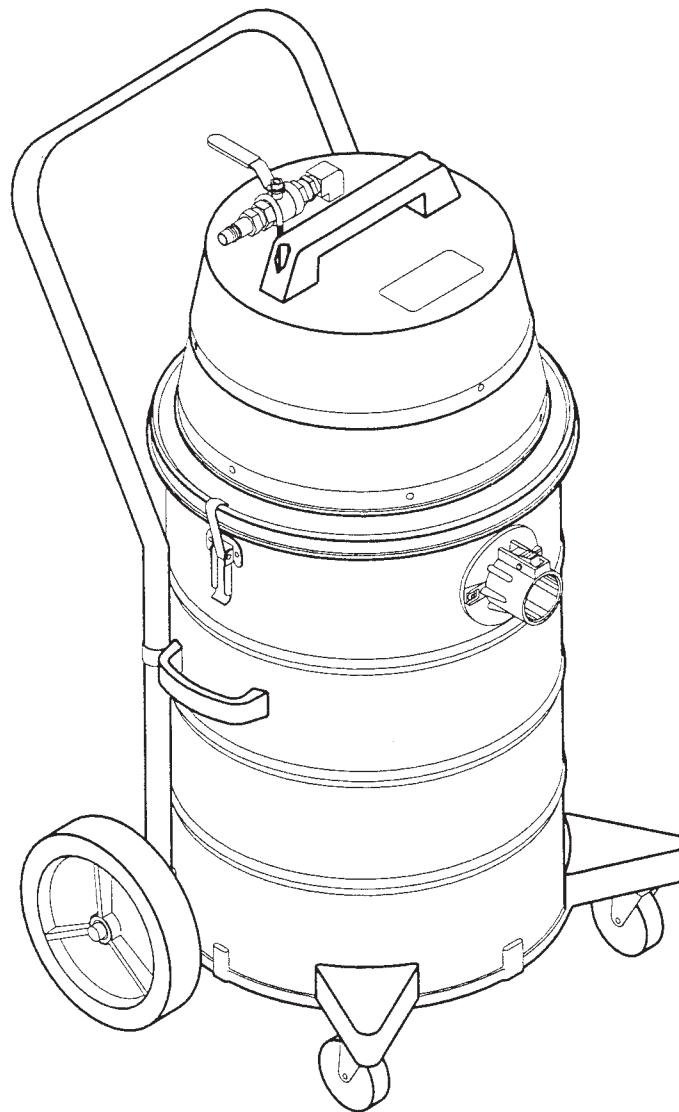
**Model:  
C87515-03  
C87555-01**

**OPERATION**

**SERVICE**

**PARTS**

**CARE**



Revised 05/17

***Minuteman***<sup>®</sup>

# **MODEL X705-15 AIR OPERATED VACUUM. DRY RECOVERY ONLY. EQUIPPED WITH H.E.P.A. FILTER 99.99 EFFICIENT AT 0.12 MICRONS.**

## **INSPECTION**

Carefully unpack and inspect your machine for shipping damage. Each unit is tested and thoroughly inspected before shipment, therefore, any damage is the responsibility of the delivering carrier who should be notified. Read all instructions carefully before operating.

## **SPECIAL WARNING**

Air operated equipment can generate static electricity during use. Static dissipating arcing can be generated and occur if equipment and accessories are not grounded. Risk of explosion is possible if operated near explosive materials or vapors. Do not operate this equipment near flammable materials such as solvents, thinners, fuels, grain dust, etc.

## **SPECIAL WARNING TO PURCHASER**

Use of replacement filters and/or prefilters not manufactured by Minuteman, Inc. or its designated licensees, will void all warranties expressed or implied. A potential health hazard exists without exact original equipment replacement.

## **AIR PRESSURE AND C.F.M. VOLUME REQUIRED**

For maximum performance, operate with 1/2" air pressure line, 80 PSI (max. 100 PSI) and 37 input C.F.M. Air pressure control valve can be regulated to operate with lower pressure and C.F.M. when maximum is not required.

## **MAINTENANCE AND USAGE**

Air supplied to vacuum must be clean and dry to avoid contamination and to maintain optimum performance.

Empty tank, clean filter bag and replace disposable filters regularly. Clogged filters restrict air flow and results in reduced vacuum performance.

Always shut off main air supply and open air valve at vacuum to relieve pressure before disconnecting air pressure line.

## **OPERATION AND FILTER CARE INSTRUCTIONS**

Your Minuteman vacuum has been specifically designed to clean up ultra fine hazardous toxic dust materials. Special filters reduce the incidence of air-borne dust that would be created by any other method of cleaning.

During the cleanup of toxic dry materials, do not sweep, scoop, shovel, or in any manner handle other than by vacuuming.

Do not at any time attempt to bypass, remove, substitute, or by any other means change the type of filters used in this vacuum. Use only approved Minuteman vacuum filters and filter bags.

Before attempting to use and before cleaning, be certain you fully understand the instructions given for the setting up and cleaning/changing of filters of this vacuum.

Since each facility has its own individual and unique cleaning problems, it is suggested that you use the following guidelines in determining the length between filter changes or cleaning the vacuum tank.

## **ASSEMBLY PROCEDURE FOR X705-15, 55**

(See schematic on page 10)

1. Take the paper filter protector #4 and insert into tank. Snap the elastic band around the rim of the tank. Allow two inches to overlap the tank rim.
2. Place cloth filter bag assembly #3 into tank. Center frame of filter around tank rim.
3. Turn H.E.P.A. filter lid assembly #1 upside down on worktable. Center one pink impactation filter cartridge #2 onto H.E.P.A. filter.
4. Place vacuum lid assembly #1 onto tank #5, center and fasten lid latches.

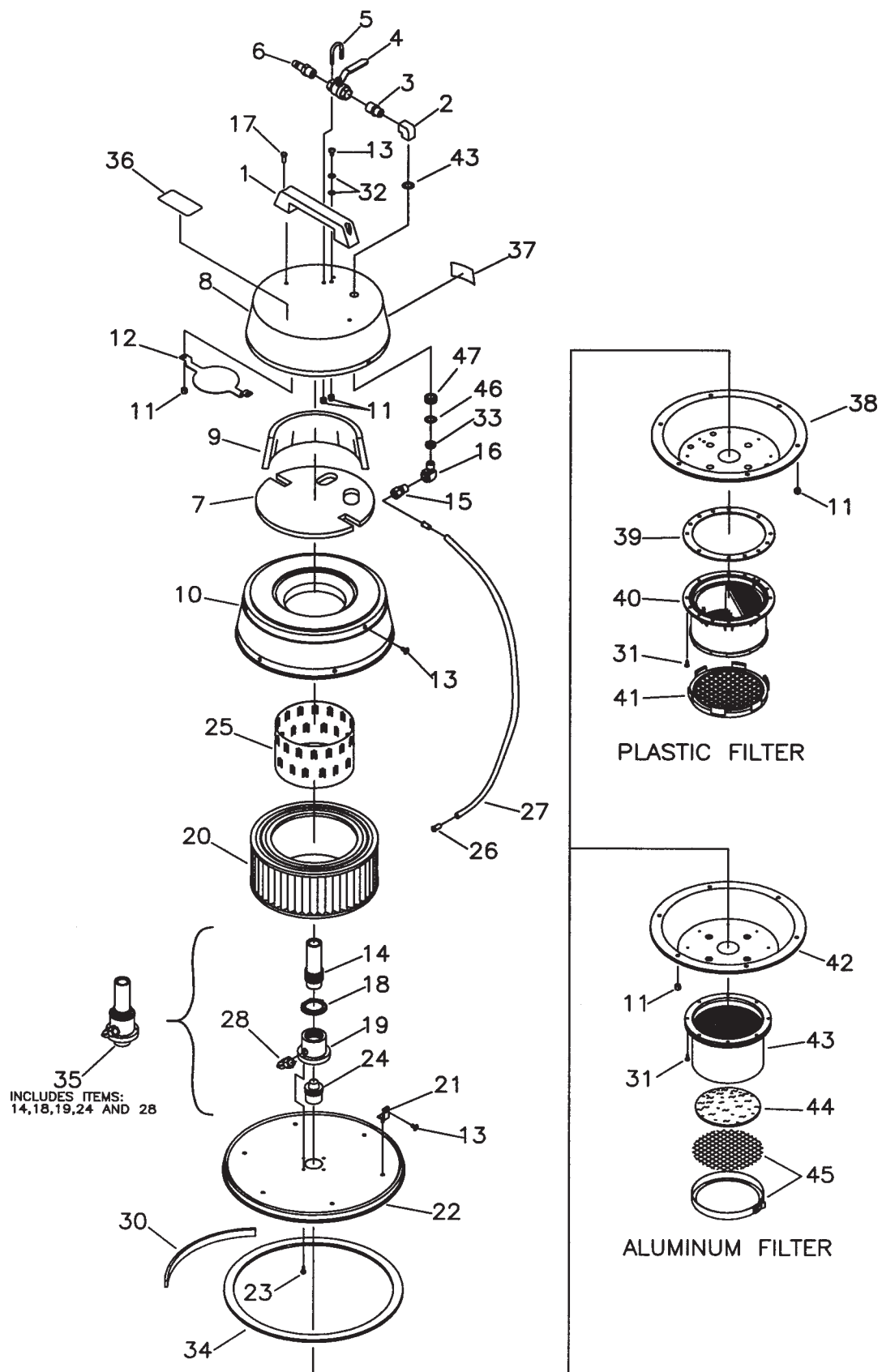
## PROCEDURE FOR REMOVING CONTAMINATED FILTERS AND FOR CLEANING OF CONTAMINATED TANK FOR MODEL X705 SERIES

For the benefit of your health, you should always wear a face mask and protective clothing approved and recommended by your Safety Department for the particular hazardous waste material you are working with. Check with your Safety Department or Industrial Hygienist for their instructions before attempting to clean out vacuum.

1. Shut off main air pressure valve feeding air to vacuum. Open air valve on vacuum lid to relieve pressure on line. If equipped with quick coupler, disconnect air pressure line.
2. Carefully and **very** slowly, remove vacuum lid only. (Be sure you have not accidentally lifted the cloth filter bag at the same time.) Set lid assembly aside.

Turn upside down to check pink impaction filter #2. If impact filter shows discoloration due to dust penetration, remove and place in proper disposal container.

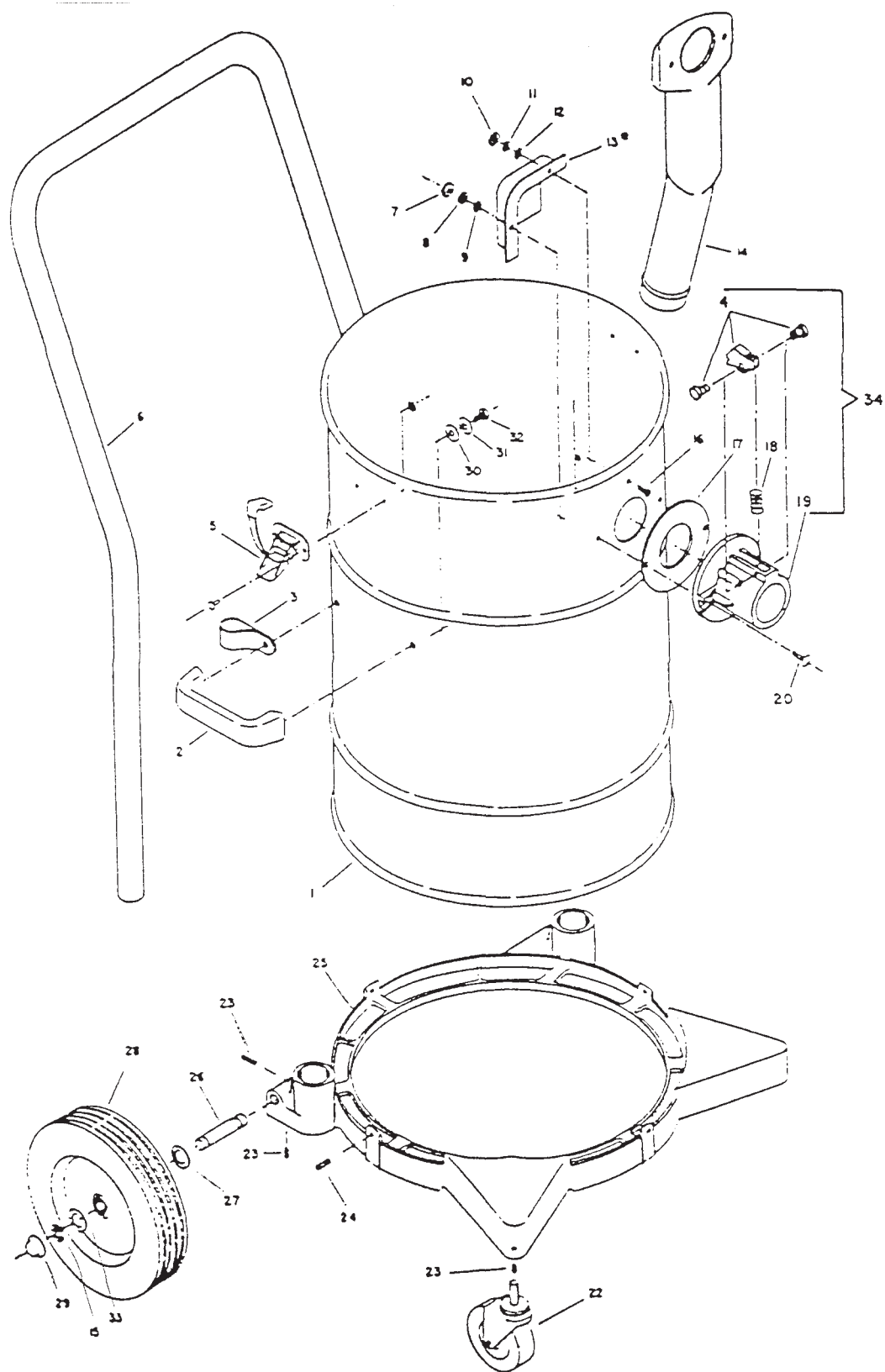
3. Visually check H.E.P.A. filter. If filter shows signs of dust penetration, revise cleaning and filter change procedure to be done more frequently. Be absolutely sure all filters and prefilters are always used and installed properly. Reassemble H.E.P.A. filter following step 2.
4. Remove cloth filter bag with bag frame. Check for residue on bag. If required, vacuum clean **only**, do not shake bag in open atmosphere.
5. Carefully undo the elastic band on the filter protector bag, fold in, and place this filter into proper disposal container.
6. Carefully empty contents of tank into proper disposal container.
7. Using a wiping cloth dampened with water (not soaking wet), wipe down all the exposed surfaces inside the tank; put all wiping material into disposal container.
8. **CAUTION:** Hazardous materials must be disposed of properly. Never throw contaminated debris into your usual trash receptacle. Check with your Safety Department or Industrial Hygienist for final disposal requirements.



## Parts List

ITEM NO.	PART NO.	QTY.	DESCRIPTION
1	460000	1	HANDLE
2	700028	1	3/8 X 3/8 BRASS ELBOW
3	420017	1	HEW NIPPLE REDUCER
4	701009	1	.50 VALVE
5	712105	1	U-BOLT
6	701010	1	.50 COUPLER
7	700018	1	DOME FELT
8	700022PTD	1	TOP COVER
9	700016	1	FELT LINER
10	700023PTD	1	FILTER COVER
11	712667	15	1/4-20 SS NYLOC NUT
12	700019	1	AIR DEFLECTOR
13	710178	10	1/4-20 X .50 SCR-MC STPL
14	700012	1	VENTURI EXHAUST TUBE
15	420008	1	MALE CONNECTOR
16	830062	1	3/8 X 3/8 BRASS ST90
17	711204	2	BLT HH 1/4-20 X .75 STPL
18	700014	1	LOCKING NUT
19	700011	1	VENTURI HOUSING
20	700026	1	EXHAUST FILTER
21	832106	6	BRACKET MOUNTING TAB
22	700024	1	BOTTOM PAN
23	712536	4	SCR-MC 10-24 X .62 SS
24	700013	1	VENTURI INTAKE
25	700017	1	PERFORATED SHIELD
26	420011	2	BRASS INSERT
27	700021	1	POLY HOSE 32" LONG
28	420009	1	MALE ELBOW 469F
30	480053	1	RUBBER LOCATING RING
31	711106	8	NO.10 X .75 PL SCR-ST-A
32	711505	2	WSR-FLAT 1/4
33	829285PLT	1	SPACER - ZINC PLATED
34	480052	1	GASKET. RUBBER .25X.87X.50
35	700010	1	VENTURI ASSEMBLY
36	715003	1	DECAL. AIR PRESSURE
37	715029	1	DECAL, SERIAL NAME PLATE
38	700039	1	HEPA ADAPTER-PLASTIC FILTER
39	700043	1	HEPA FILTER GASKET
40	110004	1	HEPA FILTER COPOLM-PLASTIC
41	110005	1	PRE-FILTER ASSEMBLY
42	310000PTD	1	HEPA ADAPTER-ALUM. FILTER
43	110010	1	HEPA FILTER COPOLM-ALUM.
44	110121PKG	1	IMPACT FILTERS
45	750006	1	RETAINER IMPACT ASSEMBLY
46	711513	2	WSR-FLT .689X1.06X.029 SS
47	260274	1	GROMMET

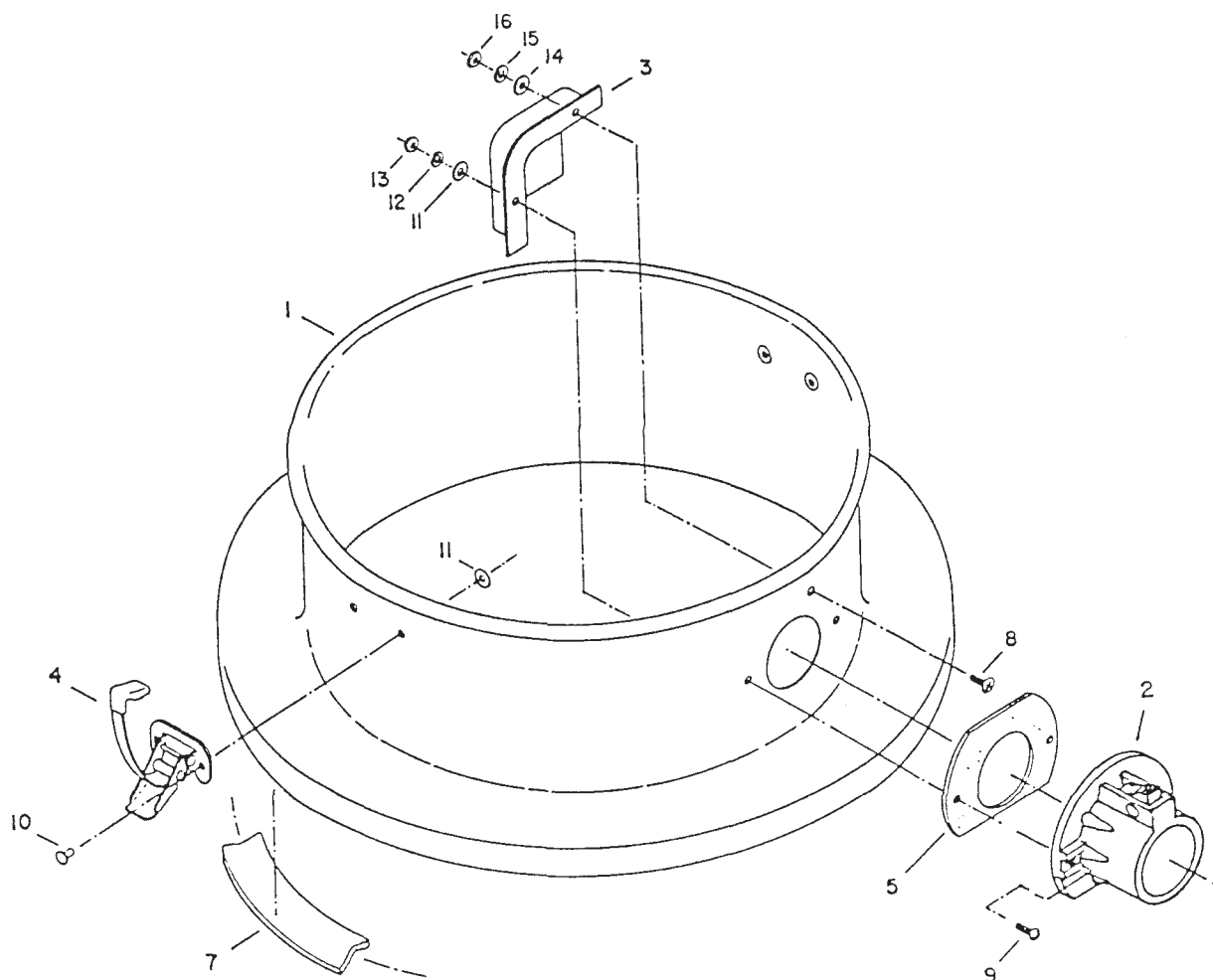
# 15 GALLON PAINTED/STAINLESS STEEL TANK WITH MOLDED INTAKE





## Parts List

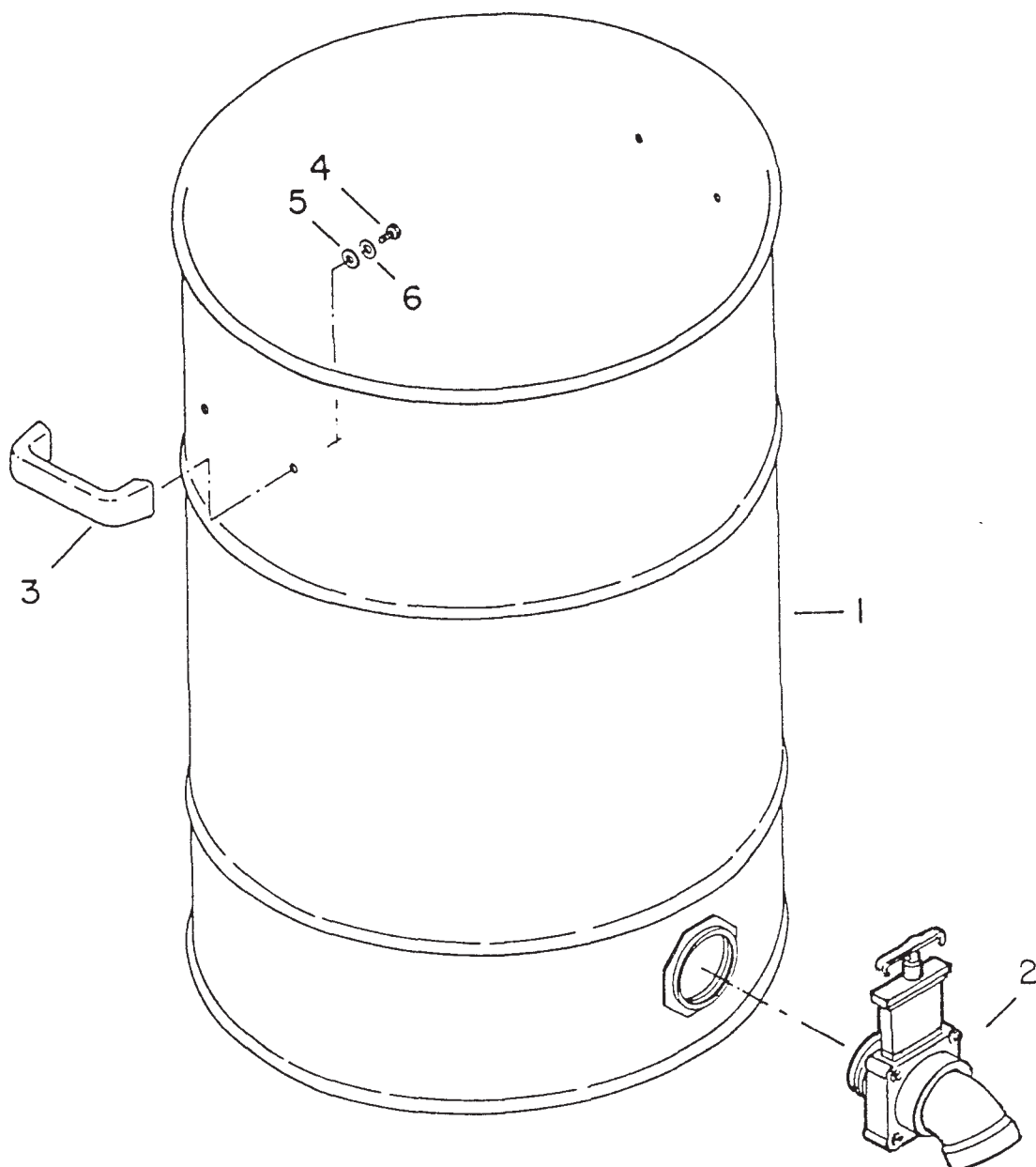
ITEM NO.	PART NO.	QTY.	DESCRIPTION
1	900001	1	Tank, PTD 15 gal.
1a	900003POL	1	Tank, Polished 15 Gal. SS
2	900031	1	Handle, Tank Polished
3	900038	2	Clamp, Handle
4	390001	1	Trigger with Pins
5	761054	2	Latch
6	900037PLT	1	Handle, Plated
7	711310	2	Nut-Hex 10-32 ST PL
8	711543	2	Washer-Helical #10
9	711503	2	Washer-Flat #10
10	711304	1	Nut-Hex 8-32 ST PL
11	711542	1	Washer-Helical #8
12	711502	1	Washer-Flat #8
13	900035	1	Deflector, Intake
14	390016	1	Molded Downtube, New Style
15	711713	2	Retaining Ring-E Ext.
16	710530	1	SCR-MC 8-32 x .5 BR
17	390087	1	Gasket
18	390002	1	Spring
19	390101	1	Intake Aluminum
20	710154	2	SCR-MC 10-32 x .562 SS
22	900033	2	Caster, Swivel
23	711005	4	SCR-SK 1/4-20 x .31
24	711006	6	SCR-SK 1/4-20 x .62
25	760984PTD	1	Bracket, Wheel
26	900066	2	Axle
27	711524	2	Washer-Wave .52 x .87 x .01
28	900040	2	Wheel
29	130032	2	Cap, Retainer
30	711591	4	Washer-Rubber
31	711505	4	Washer-Flat
32	711203	4	Bolt-HH 1/4-20 x .62
33	711594	2	Washer-Flat .88 x .03 NI
34	390110	1	Intake Assy. Aluminum
***	390012		Molded Adapter 1-1/4
***	390015		Molded Adapter 1-1/2
***	390020		Molded Adapter 2.00
***	750220		Tank Assy. Comp. 15 Gal. PTD Asbestos
***	750221		Tank Assy. Comp. 15 Gal. SS Asbestos
***	750322		Wheel Bracket Assy. Complete
***	750381		Tank Assy. Comp. PTD w/Deflector
***	750382		Tank Assy. Comp. SS w/Deflector



## Parts List

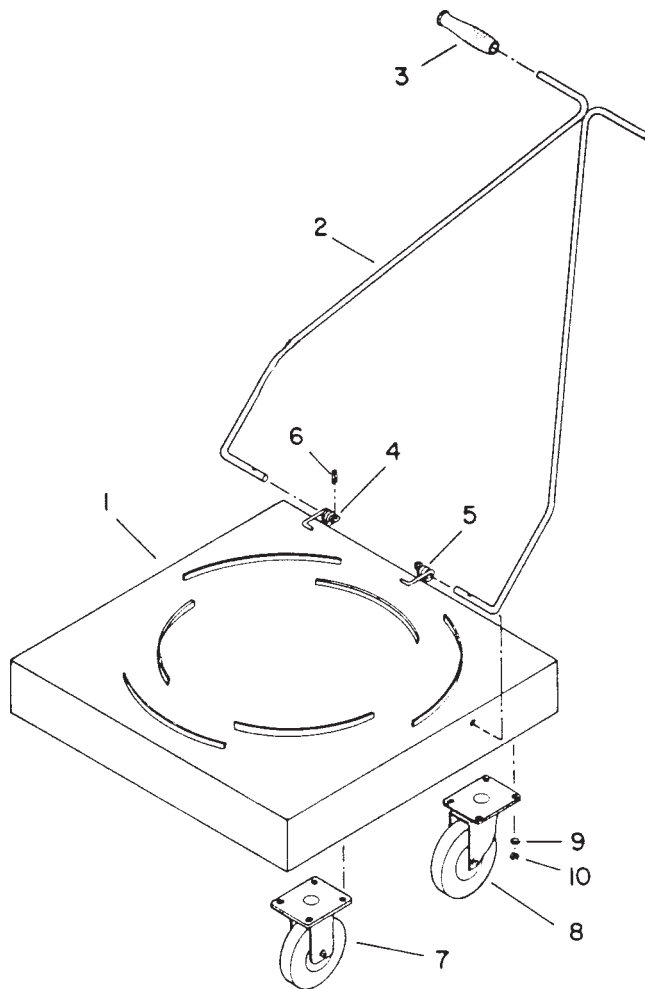
Item	Part No.	Qty	Description
1	806016PTD	1	55 Gal. Adapter Painted
2	390110	1	Intake Assy. Aluminum
3	900035	1	Deflector, Intake
4	761054	2	Latch
5	390087	1	Gasket Diecut Poron Intake
7	806006	1	Gasket, Raw
8	710530	1	SCR-MC 8-32 x .50 BR
9	712824	2	SCR-THMS 10-24 x .75 STPL
10	711915	4	Rivet-Tube .19 x .28 NI PL
11	711503	6	WSR-Flat #10
12	711543	2	WSR-Helical #10
13	712638	2	Nut Hex 10-24 SS Nyloc
14	711502	1	WSR-Flat #8
15	711542	1	WSR-Helical #8
16	711304	1	Nut-Hex 8-32 STPL
***	C80601-80		55 Gal. Adapter Assy.





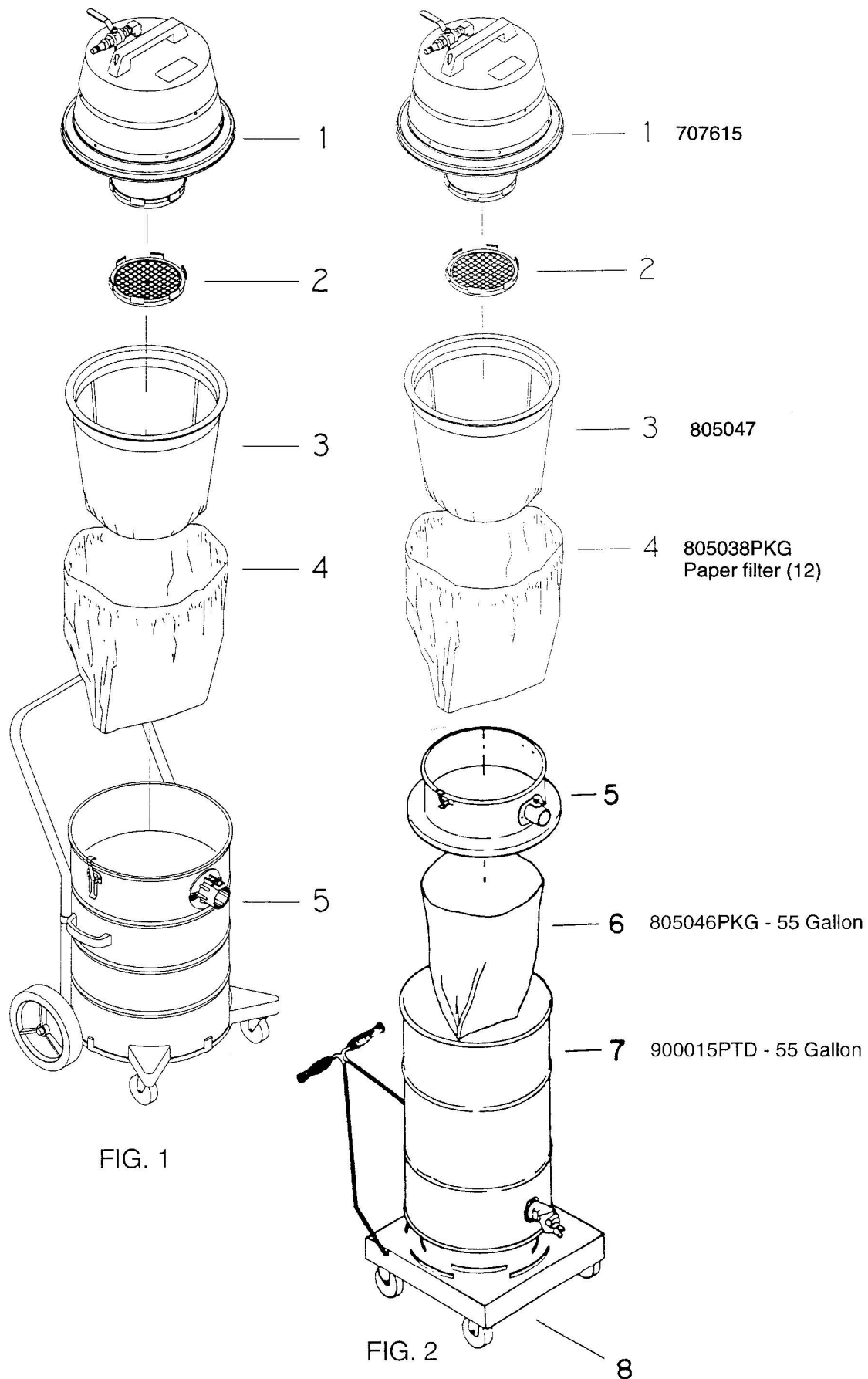
### PARTS LIST

Item	Part No.	Qty	Description
1	900015PTD	1	Tank 55 Gal. PTD No Handles
2	900047	1	Dump Valve
3	900031POL	2	Handle, Tank Polished
4	711203	4	BLT, HH 1/4-20 x .62
5	711591	4	Washer, Rubber
6	711505	4	WSR, Flat 1/4
***	805046PKG		Drum Liner 55 Gal. Pkg. 12



### Parts Listings

ITEM NO.	PART NO.	QUANTITY	DESCRIPTION
1	750045	1	Weldment dolly 55
2	900051	1	Weldment, handle
3	900052	2	Grip, handle
4	900080	1	Spring, torsion RH
5	900081	1	Spring LH
6	711642	2	Rollpin
7	761050	2	Caster, rigid 5"
8	761049	2	Caster, swivel 5"
9	711545	16	WSR, helical Spr Loc 5/16
10	711319	16	Nut-Hex 5/16-18 ST PL
****	900048		Dolly cart complete



**Minuteman International Made Simple Commercial Limited Warranty REVISION P EFFECTIVE 5/1/2017**

Minuteman International, Inc. warrants to the original purchaser/user that the product is free from defects in workmanship and materials under normal use. Minuteman will, at its option, repair or replace without charge, parts that fail under normal use and service when operated and maintained in accordance with the applicable operation and instruction manuals. All warranty claims must be submitted through and approved by factory authorized repair stations.

This warranty does not apply to normal wear, or to items whose life is dependent on their use and care, such as belts, cords, switches, hoses, rubber parts, brushes, electrical motor components or adjustments. Parts manufactured by Minuteman are covered by and subject to the warranties and/or guarantees of their manufacturers. Please contact Minuteman for procedures in warranty claims against these manufacturers.

**Special warning to purchaser** -- Use of replacement filters and/or pre-filters not manufactured by Minuteman or its designated licensees, will void all warranties expressed or implied. A potential health hazard exists without original equipment replacement.

All warranted items become the sole property of Minuteman or its original manufacturer, whichever the case may be.

Minuteman disclaims any implied warranty, including the warranty of merchantability and the warranty of fitness for a particular purpose. Minuteman assumes no responsibility for any special, incidental or consequential damages.

This limited warranty is applicable only in the U.S.A. and Canada, and is extended only to the original user/purchaser of this product. Customers outside the U.S.A. and Canada should contact their local distributor for export warranty policies. Minuteman is not responsible for costs or repairs performed by persons other than those specifically authorized by Minuteman. This warranty does not apply to damage from transportation, alterations by unauthorized persons, misuse or abuse of the equipment, use of non-compatible chemicals, or damage to property, or loss of income due to malfunctions of the product.

If a difficulty develops with this machine, you should contact the dealer from whom it was purchased.

This warranty gives you specific legal rights, and you may have other rights which vary from state to state. Some states do not allow the exclusion or limitation of special, incidental or consequential damages, or limitations on how long an implied warranty lasts, so the above exclusions and limitations may not apply to you.

Mode	Part	Labo	Poly	Travel*
Cord Electric Group	5yrs	3yrs	12yrs	90 days
Battery Scrubbers (incl. on board charger)	5yrs	3yrs	12yrs	90 days
Battery and Manual	3yrs	3yrs	12yrs	90 days

**Exceptions...**

Mode	Part	Labor	Poly	Travel*
Port A Scrub, all models (incl. on board charger)	1yr	6months	12yrs	90 days
A3S Blower	1yr	1yr	0	0
Phenom Dual Motor Upright Vacuums	2yrs	2yrs	0	0
Explosion Proof Vacuum	1yr	1yr	0	0
Propane Burnisher	1yr	1yr	0	90 days
E14BQP and E14115	1yr	1yr	12yrs	90 days
**Travel, 2 hours max				

Stand-alone Battery Chargers:	One
Replacement Parts:	Ninety days
Batteries	0-3 months full replacement, 4-12 months
Polypropylene Plastic Tanks:	12yr warranty, no additional labor

# Minuteman®

**World Headquarters**  
Minuteman International, Inc.  
14N845 U.S. Route 20  
Pingree Grove, IL 60140

Minuteman Canada, Inc.  
2210 Drew Road  
Mississauga, Ontario  
L5S 1B1

(847) 264-5400  
FAX (847) 683-5207

(905) 673-3222  
FAX (905) 673-5161

987722 Üçüncü Baskı  
Printed in U.S.A.