

705 Series Air Operated Vacuums 15 & 55 Gallon Units

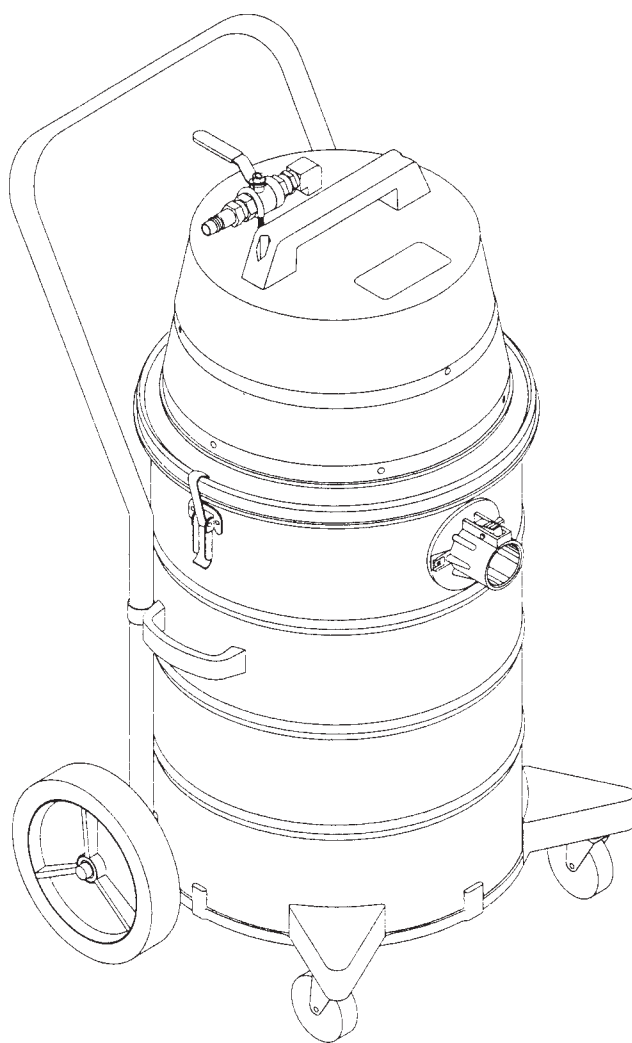
Model:
C70515-01
C70555-01

OPERATION

SERVICE

PARTS

CARE



Revised 05/17

Minuteman[®]

**MODEL 705 AIR OPERATED
WET/DRY RECOVERY VACUUMS**

OPERATING INSTRUCTIONS

INSPECTION

Carefully unpack and inspect your machine for shipping damage. Each unit is tested and thoroughly inspected before shipment, and any damage is the responsibility of the delivering carrier who should be notified. Read all instructions carefully before operating.

SPECIAL WARNING

Air operated equipment can generate static electricity during use. Static dissipating arcing can be generated and occur if equipment and accessories are not grounded. Risk of explosion is possible if operated near explosive materials or vapors. Do not operate this equipment near flammable materials such as solvents, thinners, fuels, grain dust, etc.

AIR PRESSURE AND C.F.M. VOLUME REQUIRED

For maximum performance, operate with 1/2" air pressure line, 80 PSI (max. 100 PSI) and 42 input C.F.M. Air pressure control valve can be regulated to operate with lower pressure and C.F.M. when maximum is not required.

MAINTENANCE AND USAGE

Air supplied to vacuum must be clean and dry to avoid contamination and to maintain optimum performance.

Empty tank, clean filter bag and replace disposable filters regularly. Clogged filters restrict air flow and results in reduced vacuum performance.

Always shut off main air supply and open air valve at vacuum to relieve pressure before disconnecting air pressure line.

**ASSEMBLY PROCEDURE FOR MODEL C70515-01
WET/DRY RECOVERY VACUUM
(See schematic on page 10, figure 1)**

1. For dry recovery, place filter bag assembly #2 onto tank assembly #4.
2. Place lid assembly #1 onto tank and fasten lid latches.
3. Connect 1/2" air pressure line to shut off valve on lid.
4. Attach vacuum hose to intake. Vacuum intake will accept 1 1/2" and/or 2" hose.
5. To operate, open air shut off valve to desired setting. OPTION: For fine dust recovery, a filter bag protector #3 is recommended to be installed ahead of the filter bag assembly #2. (Must be ordered as separate item #805038PKG of 12.)

CLEANUP PROCEDURE

For wet recovery remove filter bag #2 and filter protector #3 if used. Ball float within cage will activate at 12 gallon recovery level.

Always empty and dry tank assembly at end of each operating day or when vacuum will not be in use over extended period of time.

1. Shut off air supply at lid assembly.
2. Loosen lid latch and remove lid assembly.
3. Remove cloth filter bag assembly.
4. When filter bag protector is used, remove protector.
5. Empty tank into suitable trash container.
6. Reassemble following above procedure.

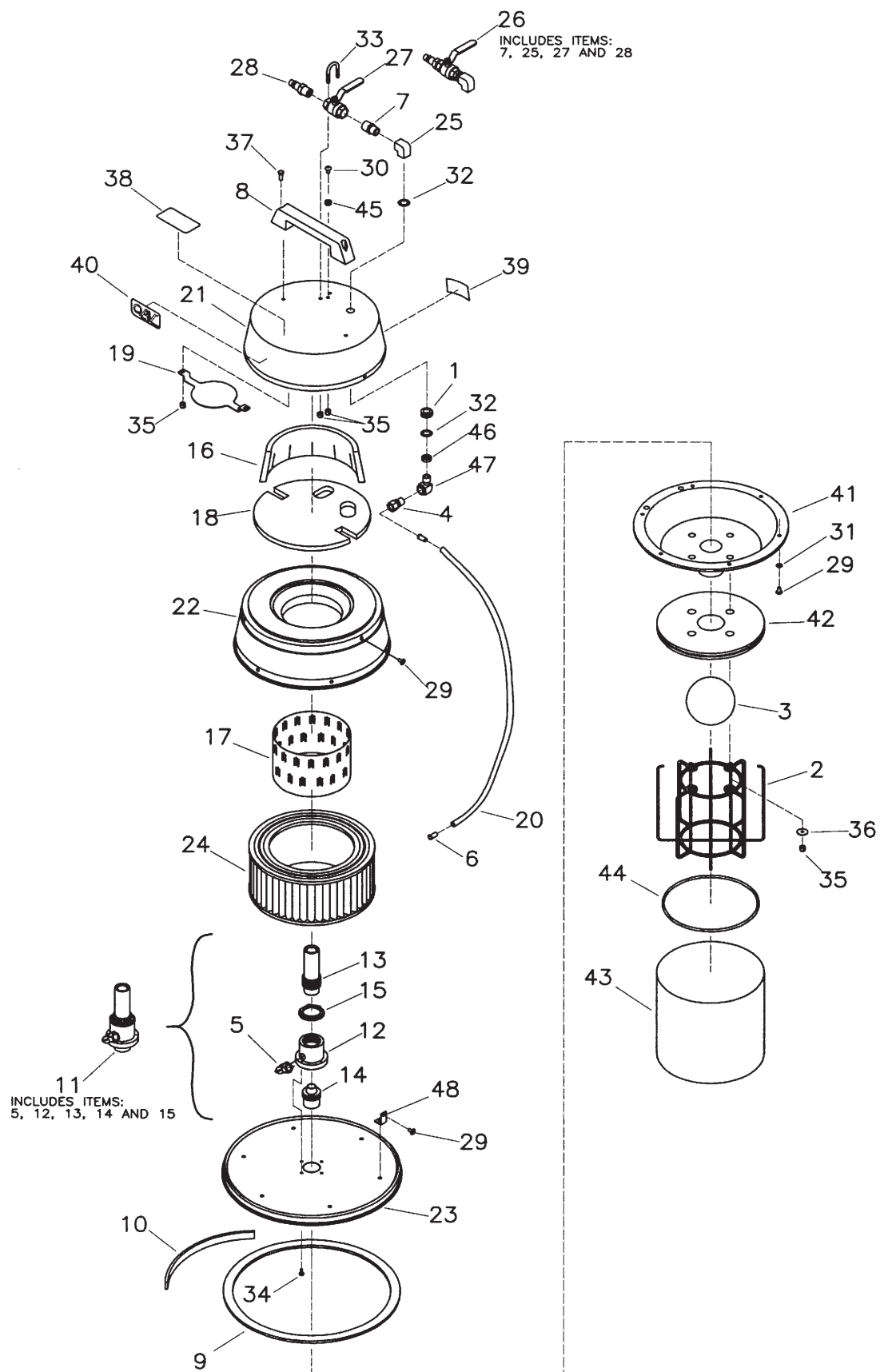
ASSEMBLY PROCEDURE FOR MODEL C70555-01
WET/DRY RECOVERY VACUUM
(See schematic on page 10, figure 2)

1. For dry recovery, place heavy duty plastic bag liner, no. 6, into drum and drape over rim of drum no. 7 (without bag liner all debris you pick up will go directly into the drum).
2. Place adapter ring no. 5 onto drum.
3. Place filter bag assembly no. 2 onto adapter ring. Option: for fine dust recovery, a filter bag protector no. 3 is recommended to be installed ahead of the filter bag assembly. When installing the filter bag protector, insert it into the adapter ring and drape the elastic over the rim of the adapter to hold it in place. (Filter bag protectors must be ordered as separate item #805038, package of 12.)
4. Place air vacuum lid assembly no. 1 onto adapter and fasten lid latches.
5. Connect 1/2" air pressure line to shut off valve on lid.
6. Attach vacuum hose to intake vacuum, intake will accept 1 1/2" and/or 2" hose.
7. To operate, open air shut off valve to desired setting. When recovering fine dust open air valve to 1/2 opening to avoid filter from overloading prematurely. Increase air supply gradually as vacuum performance may decrease.

CLEANUP PROCEDURE

For wet recovery place adapter onto drum, remove filter bag and filter protector. Place the vacuum lid assembly onto adapter on drum without filters.

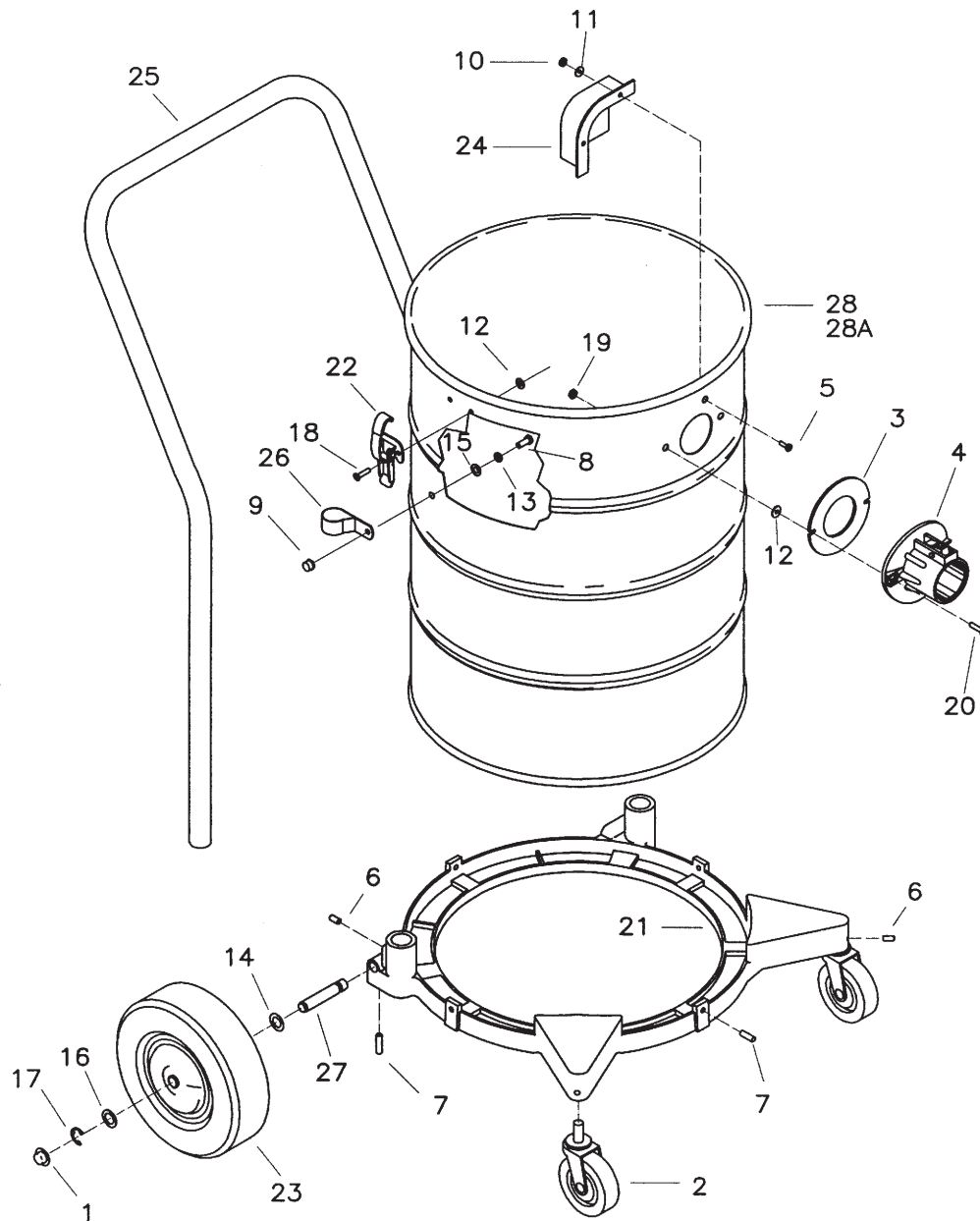
1. Shut off air supply at lid assembly.
2. Loosen lid latches and remove lid assembly.
3. Remove cloth filter bag assembly.
4. When filter bag protector is used, remove protector and place in drum or bag liner with debris.
5. Remove adapter ring.
6. If bag liner is used, gather liner at the top, tie the bag liner, place drum on its side and slide out bag liner with debris.
7. If bag liner is not used, empty drum into suitable trash container.



Parts List

Item	Part #	Qty.	Description
1	260274	1	Grommet Z-421
2	380045CTD	1	Float Cage Assembly
3	380046	1	Hollow Rubber Ball
4	420008	1	Male Connector 468F
5	420009	1	Male Elbow 469F
6	420011	2	Brass Insert 461F
7	420017	1	Hex Nipple Reducer
8	460000	1	Handle 460 Lid Black
9	480052	1	Gasket, Rubber .25x.87x.50
10	480053	1	Rubber Locating Ring
11	700010	1	Single Venturi Assy
12	700011	1	Venturi Housing
13	700012	1	Venturi Exhaust Tube
14	700013	1	Venturi Intake
15	700014	1	Venturi Locnut
16	700016	1	Felt Liner
17	700017	1	Perforated Shield
18	700018	1	Dome Felt
19	700019	1	Air Deflector
20	700021	1	Poly Hose 32" Long
21	700022PTD	1	Cover 701 PTD
22	700023PTD	1	Outer Housing Painted
23	700024	1	Bottom Pan Assy
24	700026	1	Exhaust Filter
25	700028	1	Fitting Brass 90 3/8FPT 3/8FPT
26	700014	1	Air Valve Asy
27	701009	1	.50 Valve
28	701010	1	.50 Male Coupler
29	710178	15	SCR-MC TR HD1/4-20 x .50 Zinc
30	710180	1	SCR-MC 1/4-20 x .75 Zinc
31	711504	6	WSR-Flat 1/4 SS
32	711513	2	WSR-Flat .689x1.06x.029 SS
33	712105	1	U-Bolt 1/4-20
34	712536	4	SCR-MC 10-24 x .62 SS
35	712667	8	Nut-Hex Nyloc 1/4-20 SS
36	712761	4	WSR-Flat .28x1.25x.059 SS
37	713002	2	BLT HH 1/4-20 x .75 #5
38	715003	1	Decal, Air Pressure 2.00 x 4.00
39	715029	1	Decal, Serial Name Plate
40	715388	1	Decal, QAV
41	750801	1	Water Shut-Off Adapter
42	760231MCH	1	Ring, Retainer Bag
43	760234	1	Lint Filter Bag
44	760260	1	Spring, Retainer Bag
45	81-120-A	1	Spacer .316 x .626 x .210
46	829285PLT	1	Spacer .25 x .875 x .687 Plated
47	830062	1	Fitting Brass 90 3/8MPT 3/8FPT
48	832106	6	Bracket Mounting Tab
***	700015	1	15 Gal Air Vac Lid

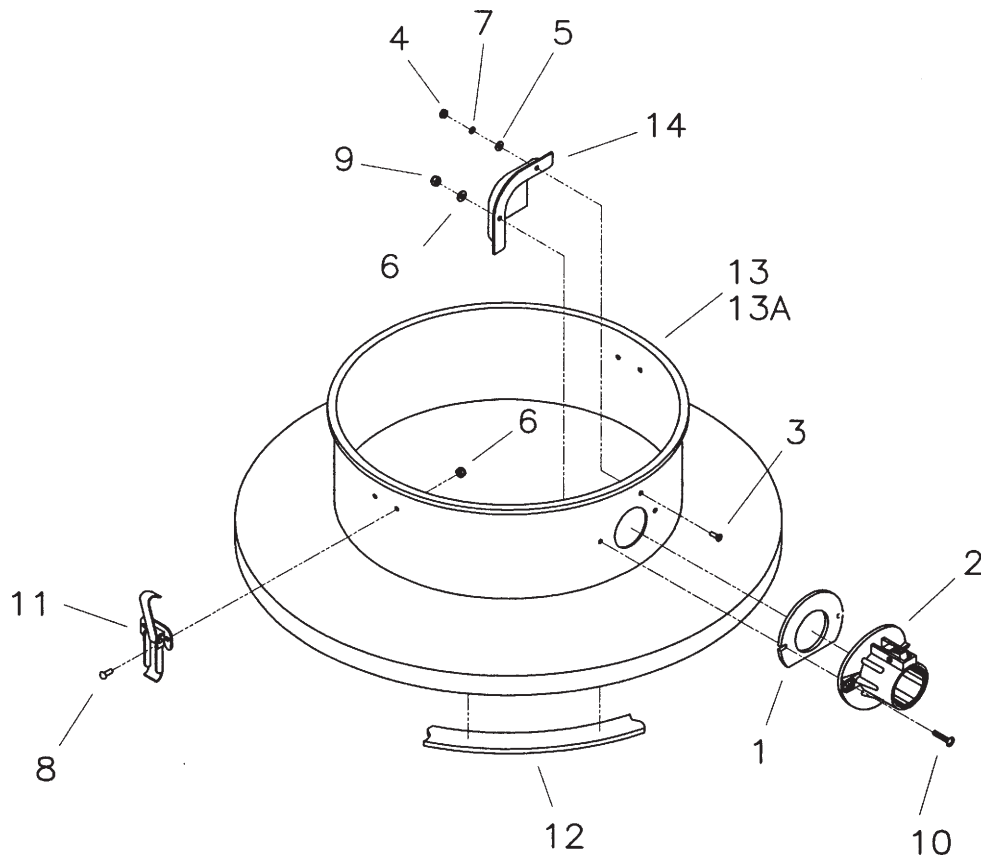
15 Gallon Painted/Stainless Steel Tank with Molded Intake



Parts List

Item	Part #	Qty.	Description
1	130032	2	Cap, Retainer
2	280016	2	Caster 3" W/3/8x5/8 Stem
3	390087	1	Gasket Diecut VNN
4	390110	1	Intake Assembly Aluminum
5	710530	1	SCR-MC 8-32x.50 BRS
6	711005	4	SK 1/4-20 x .31
7	711006	6	SK 1/4-20 x .62
8	711202	2	BLT-HH 1/4-20 x .50 STL Zinc
9	711352	2	Nut-Acorn 1/4-20 ST NI
10	711372	1	Nut-Nloc 8-32
11	711502	1	WSR-Flat #8
12	711503	6	WSR-Flat #10
13	711505	2	WSR-Flat 1/4
14	711524	2	WSR-Wave .52 x .87 x .01
15	711591	2	WSR-Rubber
16	711594	2	WSR-Flat .56 x .88 x .03 NI
17	711713	2	Ret Ring-E Ext .50
18	711915	4	Rivet-Tube .19 x .28 NI PL
19	712638	2	Nut Hex 10/24 SS Nyloc
20	712824	2	SCR-THMS 10-24x.75 STL Zinc
21	760984PTD	1	Bracket, Wheel
22	761054	2	Latch
23	900008	2	Wheel 8.00 Dia
24	900035	1	Deflector, Intake
25	900037PLT	1	Handle, Plated Common
26	900038	2	Clamp, Handle
27	900066	2	Axle
28	900001PTD	1	Tank 15G PTD
28A	900003POL	1	Tank 15GSS Polished
***	750381-1	1	TK Asy 15 GPTD Hi DF&WB
***	750382	1	TK Asy 15 GSS Hi DF&WB

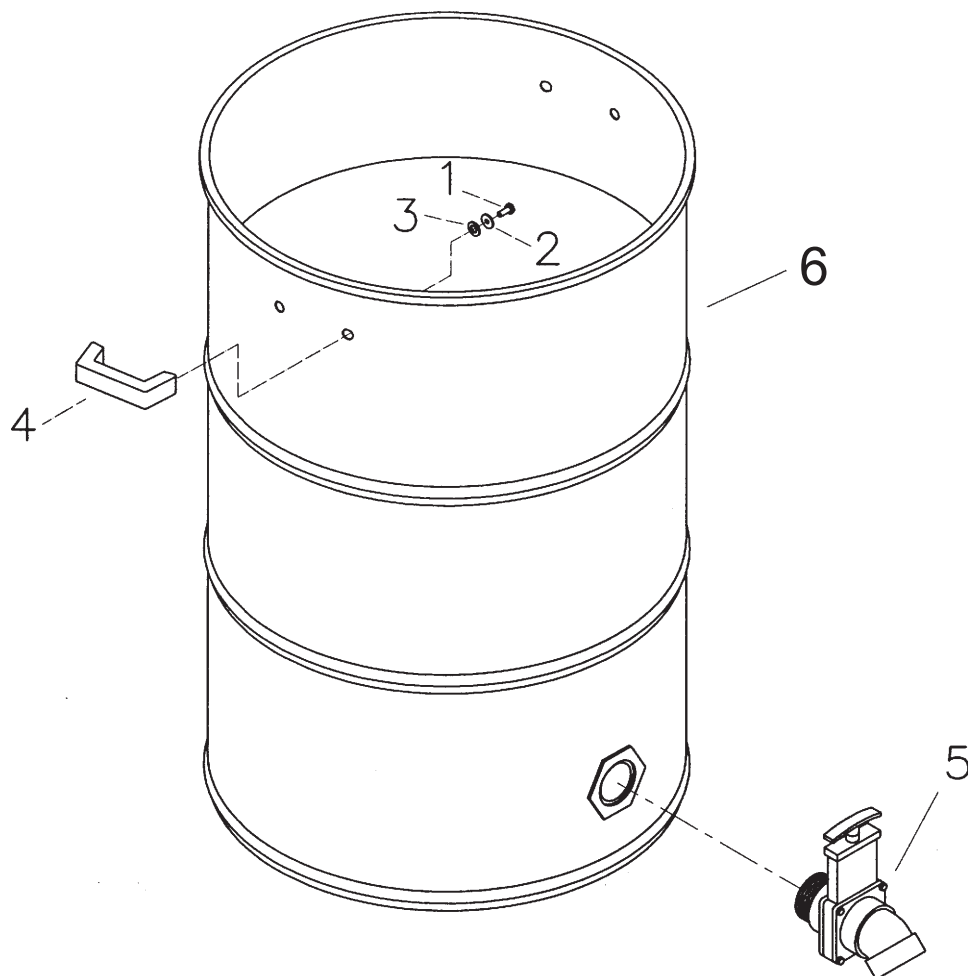
Drum Adapter



Parts List

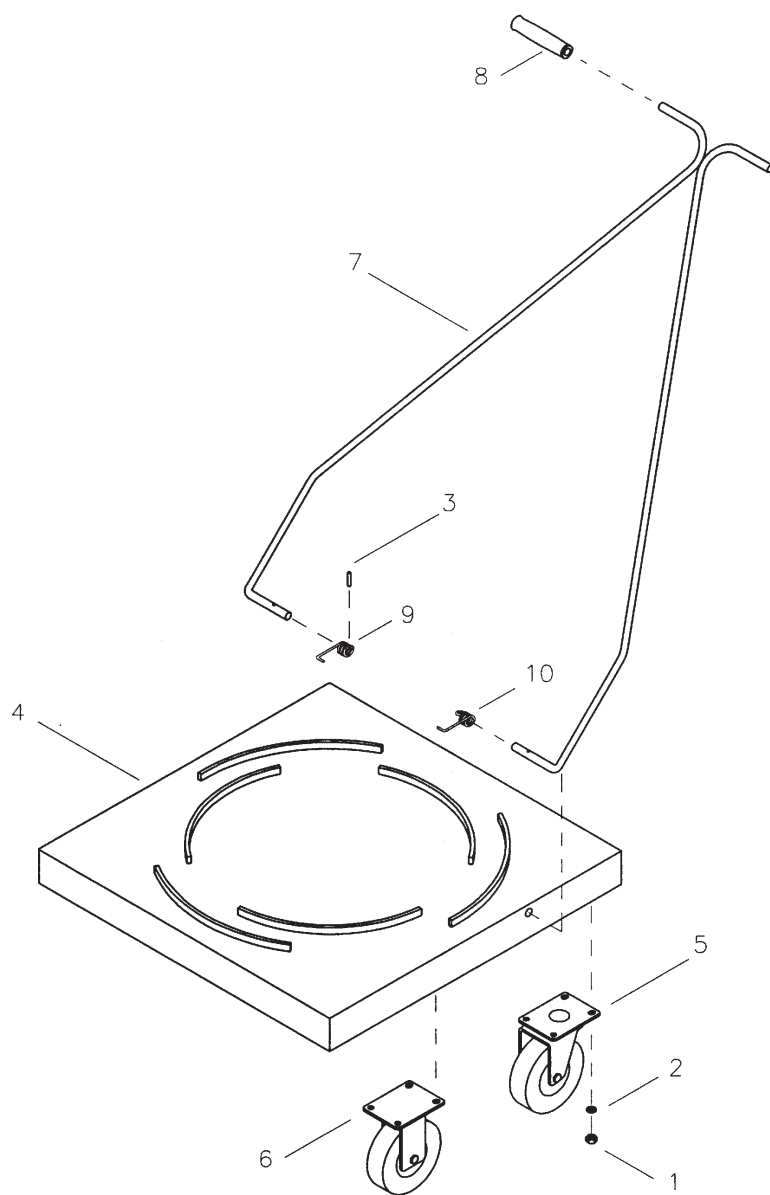
Item	Part #	Qty.	Description
1	390087	1	Gasket Diecut VNN
2	390110	1	Intake Asy Aluminum
3	710530	1	SCR-MC 8-32x.50 BR
4	711304	1	Hex-Nut 8-32 ST PL
5	711502	1	Flat Washer #8
6	711503	6	Flat Washer #10
7	711542	1	Helical Washer #8
8	711915	4	Rivet Tube .19 x .28 NI PL
9	712638	2	Nut Hex 10/24 SS Nyloc
10	712824	2	SCR-THMS 10-24x.75 STL Zinc
11	761054	2	Latch
12	806006	1	Gasket
13	806016PTD	1	55 Gal Adapter Painted
14	900035	1	Deflector, Intake
***	C80601-80	1	1x1 55GPTD w/Latches

Drum Assembly



Parts List

Item	Part #	Qty.	Description
1	711203	4	BLT, HH 1/4-20 x .62
2	711505	4	WSR, Flat 1/4
3	711591	4	Washer, Rubber
4	900031POL	2	Handle, Tank Polished
5	900047	1	Dump Valve 30 & 55G
6	900078PTD	1	Tank 30 Gal PTD Less Handles
6A	900015PTD	1	Tank 55 Gal PTD No Handles 2
***	805046PKG	1	Drum Liner 55 Gal Pkg 12



Parts List

ITEM	PART NO.	REQ'D	DESCRIPTION
1	711319	16	NUT-HEX 5/16-18 ST PL
2	711545	16	WSR-HELICAL 5/16
3	711642	2	PIN-ROLL .187 X 1.00
4	750045	1	WELDMENT DOLLY 30/55
5	761049	2	CASTER-SWIVEL GREASE SEAL
6	761050	2	CASTER-RIGID 5 "
7	900051	1	WELDMENT,HANDLE
8	900052	2	GRIP-HANDLE
9	900080	1	SPRING-TORSION RH ZINC
10	900081	1	SPRING-TORSION LH ZINC
***	900048		DOLLY ASY 55GPTD MINUTEMAN

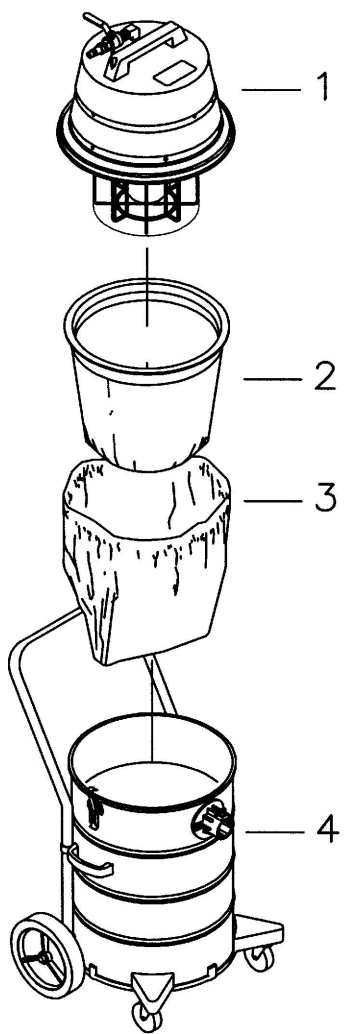


FIG. 1

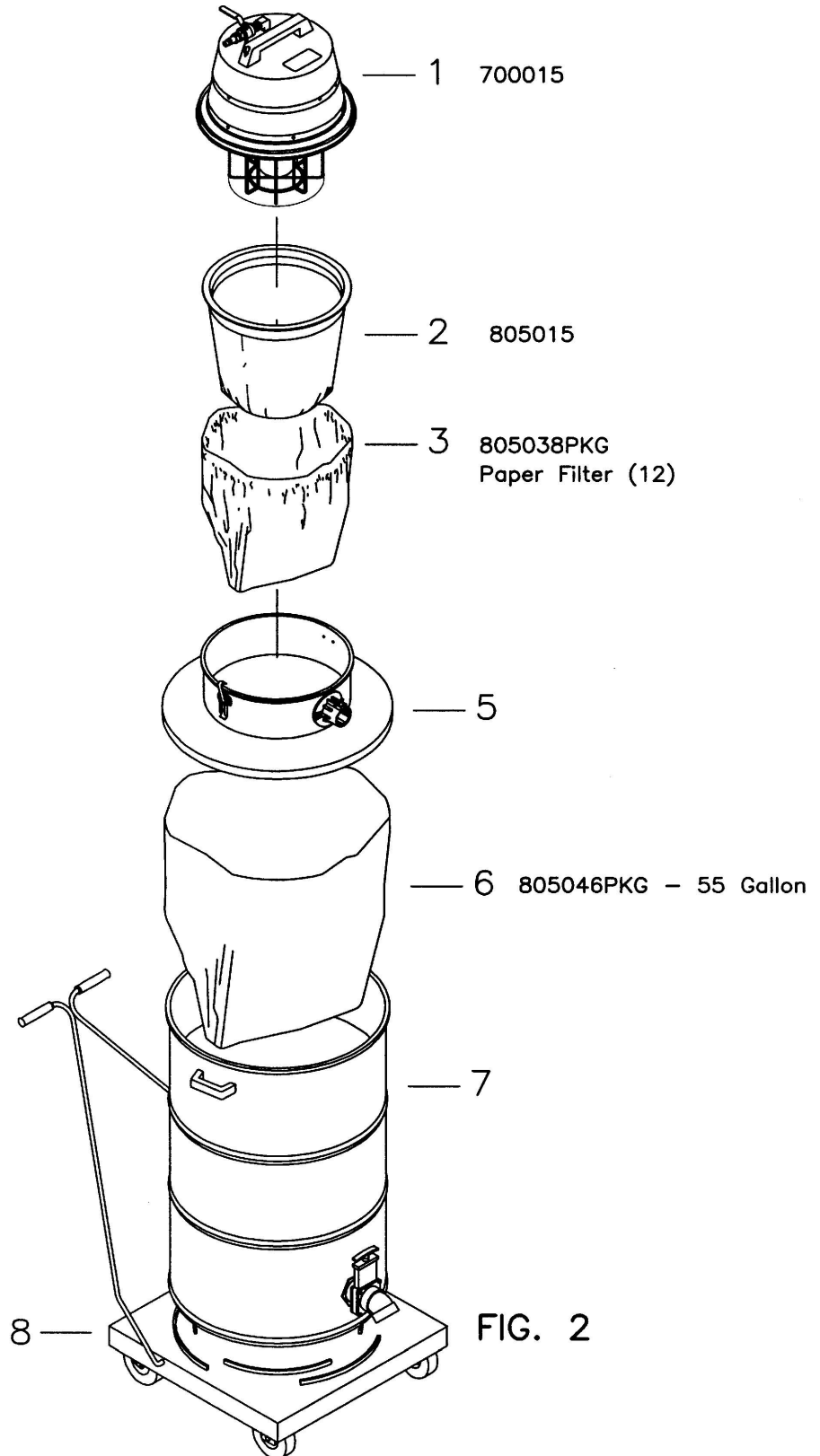


FIG. 2

Minuteman International Made Simple Commercial Limited Warranty REVISION P EFFECTIVE 5/1/2017

Minuteman International, Inc. warrants to the original purchaser/user that the product is free from defects in workmanship and materials under normal use. Minuteman will, at its option, repair or replace without charge, parts that fail under normal use and service when operated and maintained in accordance with the applicable operation and instruction manuals. All warranty claims must be submitted through and approved by factory authorized repair stations.

This warranty does not apply to normal wear, or to items whose life is dependent on their use and care, such as belts, cords, switches, hoses, rubber parts, brushes, electrical motor components or adjustments. Parts manufactured by Minuteman are covered by and subject to the warranties and/or guarantees of their manufacturers. Please contact Minuteman for procedures in warranty claims against these manufacturers.

Special warning to purchaser -- Use of replacement filters and/or pre-filters not manufactured by Minuteman or its designated licensees, will void all warranties expressed or implied. A potential health hazard exists without original equipment replacement.

All warranted items become the sole property of Minuteman or its original manufacturer, whichever the case may be.

Minuteman disclaims any implied warranty, including the warranty of merchantability and the warranty of fitness for a particular purpose. Minuteman assumes no responsibility for any special, incidental or consequential damages.

This limited warranty is applicable only in the U.S.A. and Canada, and is extended only to the original user/purchaser of this product. Customers outside the U.S.A. and Canada should contact their local distributor for export warranty policies. Minuteman is not responsible for costs or repairs performed by persons other than those specifically authorized by Minuteman. This warranty does not apply to damage from transportation, alterations by unauthorized persons, misuse or abuse of the equipment, use of non-compatible chemicals, or damage to property, or loss of income due to malfunctions of the product.

If a difficulty develops with this machine, you should contact the dealer from whom it was purchased.

This warranty gives you specific legal rights, and you may have other rights which vary from state to state. Some states do not allow the exclusion or limitation of special, incidental or consequential damages, or limitations on how long an implied warranty lasts, so the above exclusions and limitations may not apply to you.

Mode	Part	Labo	Poly	Travel*
Cord Electric Group	5yrs	3yrs	12yrs	*90 days
Battery Scrubbers (incl. on board charger)	5yrs	3yrs	12yrs	90 days
Battery and Manual	3yrs	3yrs	12yrs	90 days

Exceptions...

Mode	Part	Labor	Poly	Travel*
Port A Scrub, all models (incl. on board charger)	1yr	6months	12yrs	90 days
A3S Blower	1yr	1yr	0	0
Phenom Dual Motor Upright Vacuums	2yrs	2yrs	0	0
Explosion Proof Vacuum	1yr	1yr	0	0
Propane Burnisher	1yr	1yr	0	90 days
E14BQP and E14115	1yr	1yr	12yrs	90 days
**Travel, 2 hours max				

Stand-alone Battery Chargers:	One
Replacement Parts:	Ninety days
Batteries	0-3 months full replacement, 4-12 months
Polypropylene Plastic Tanks:	12yr warranty, no additional labor

Minuteman®

World Headquarters
Minuteman International, Inc.
14N845 U.S. Route 20
Pingree Grove, IL 60140

Minuteman Canada, Inc.
2210 Drew Road
Mississauga, Ontario
L5S 1B1

(847) 264-5400
FAX (847) 683-5207

(905) 673-3222
FAX (905) 673-5161

987725
Printed in U.S.A.