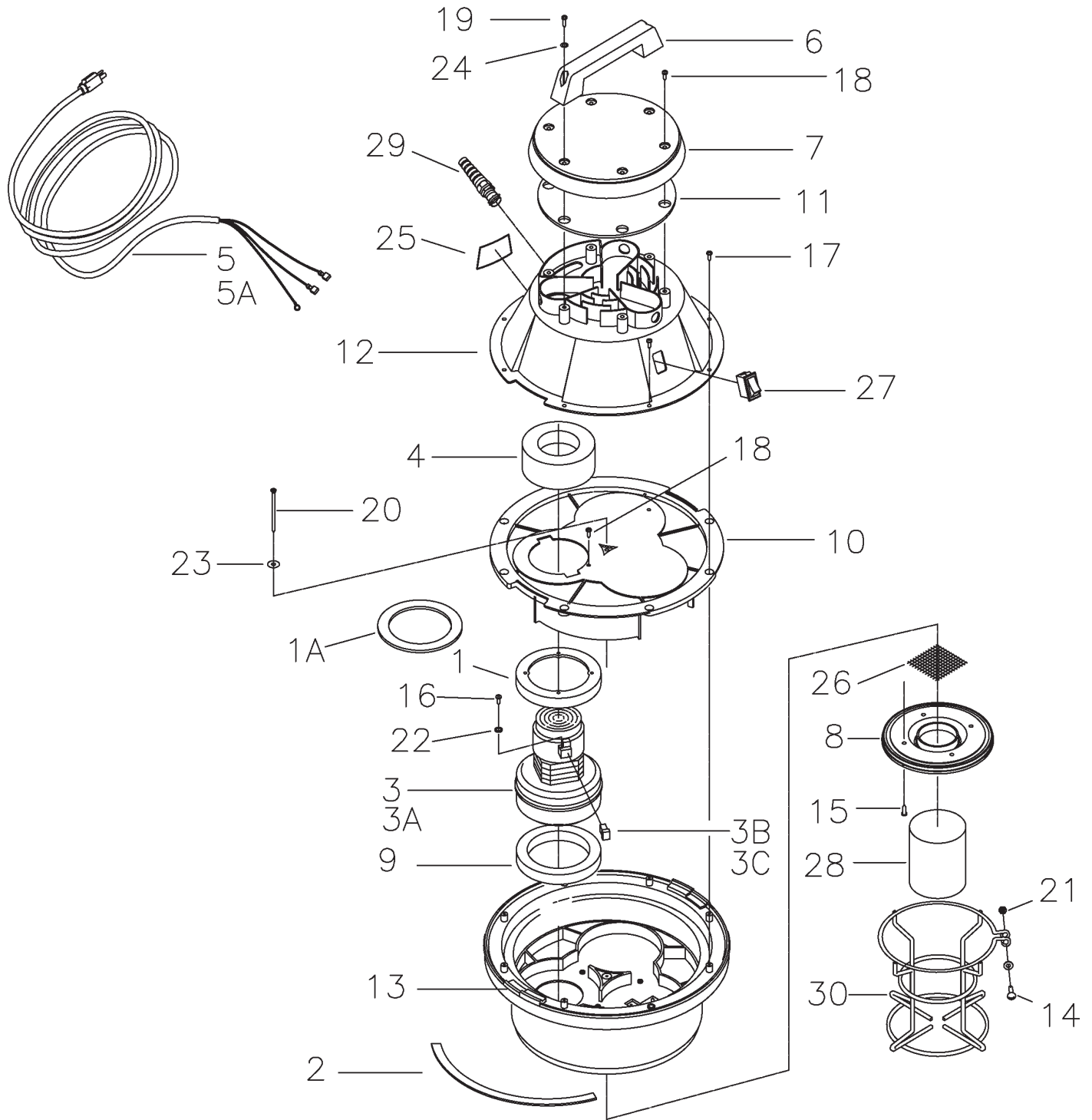


Exploded Views

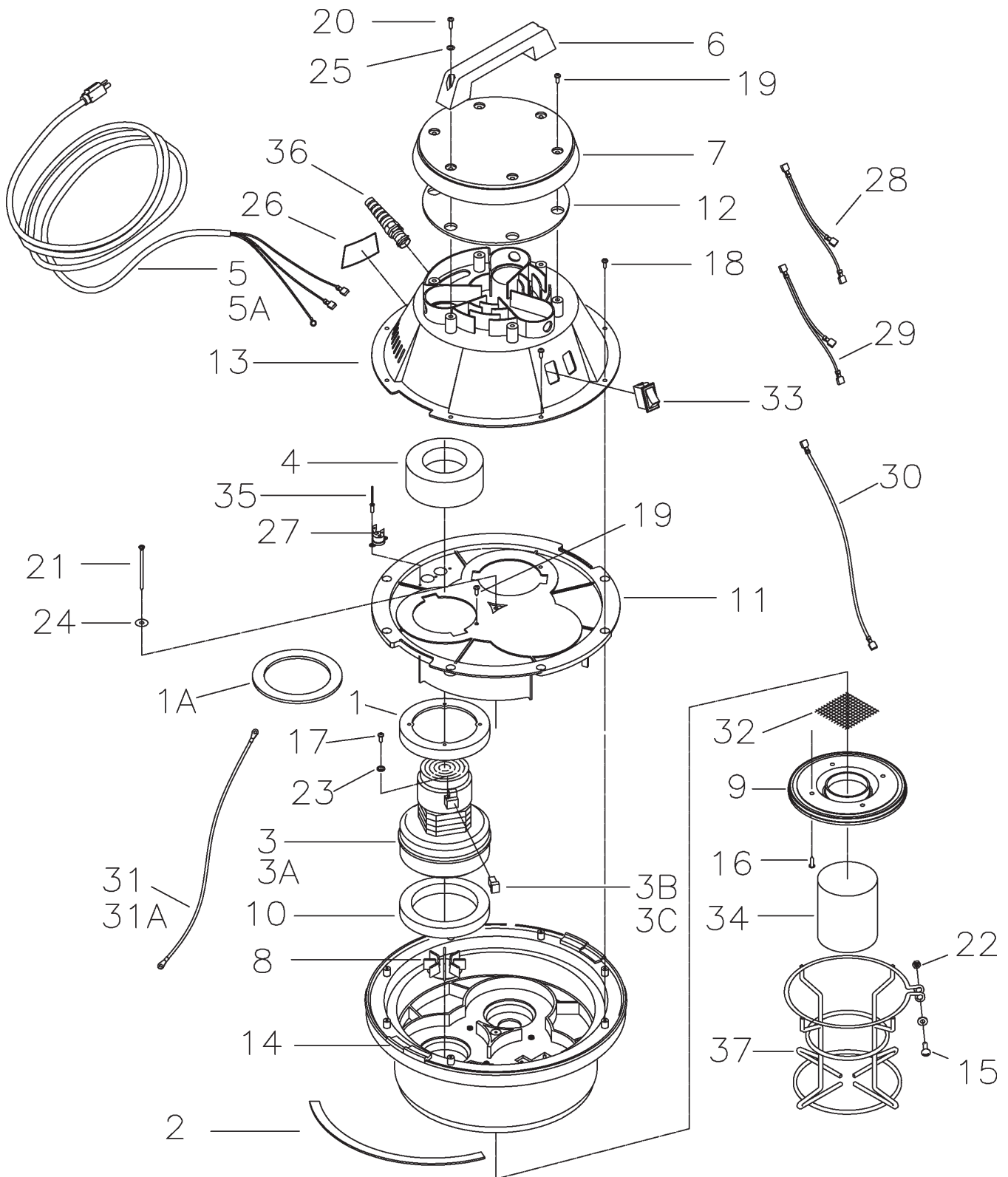
Lid Assembly - Single Motor



Lid Assembly - Single Motor BOM

Item	Part No.	Qty.	Description
1	290017	1	MOULDED VAC MOTOR GASKET (115V)
1A	380035	1	GASKET, 4.31 X 5.81 X.19 (240V)
2	290030	1	LID GASKET DIECUT 15G 290
3	380001-4	1	VAC MOTOR ECM 115V
3A	740149	1	VAC MOTOR 6296-13 240V
3B	380005	2	CARBON BRUSH REPLACEMENT (115V)
3C	380028	2	CARBON BRUSH REPLACEMENT (240V)
4	380064	1	RING, FOAM
5	381020	1	CORD-16GA-3 50FT MED GREY (115V)
5A	740600	1	CORD-EUR F3 G1.5MM 50FT B (240V)
6	460000	1	HANDLE 460 LID BLACK
7	460003	1	LID COVER 460 BLACK
8	460011	1	FLOAT CAGE ADAPTER 460 BLK
9	460019	1	GASKET 3.75 X 5.75 X .75
10	460031	1	MOTOR HOLDOWN 5.7 X 1
11	460045	1	DOME SEAL GASKET 290
12	460070	1	MOTOR COVER NEW STYLE SINGLE
13	460073	1	VAC MTR ADPTR 460 BLACK
14	710182	1	SCR-MC 1/4-20 X 1.00 ZINC
15	711109	4	SCR-ST-B 12 X .50 ZINC
16	711124	1	SCR-ST-B 10 X .37 NI
17	711160	8	SCR-HI/LO #10 X 5/8 ZINC
18	711161	5	SCR-HI/LO #10 X 3/4 ZINC
19	711162	2	SCR-HI/LO #10 X 1 1/2 ZINC
20	711170	1	SCR #10 A POINT X 3.5
21	711425	1	NUT-FLANGED WIZZ 1/4-20
22	711553	2	WSR-INT LOCK #10
23	711584	1	WSR #10
24	712320	2	WSR .22 X .45 X .04 NYL
25	715086	1	DECAL-WARNING PV TO AVOID
26	807051	1	SCREEN SS 85/105
27	809754	1	SWITCH-ROCKER
28	830987	1	FLOAT ASSY
29	833237	1	STRAIN RELIEF W/NUT
30	833454	1	FLOAT CAGE
***	290085	2	LID ASY COMP 15G INJ 115V
***	290086	1	LID ASY COMP MOLDED 230V

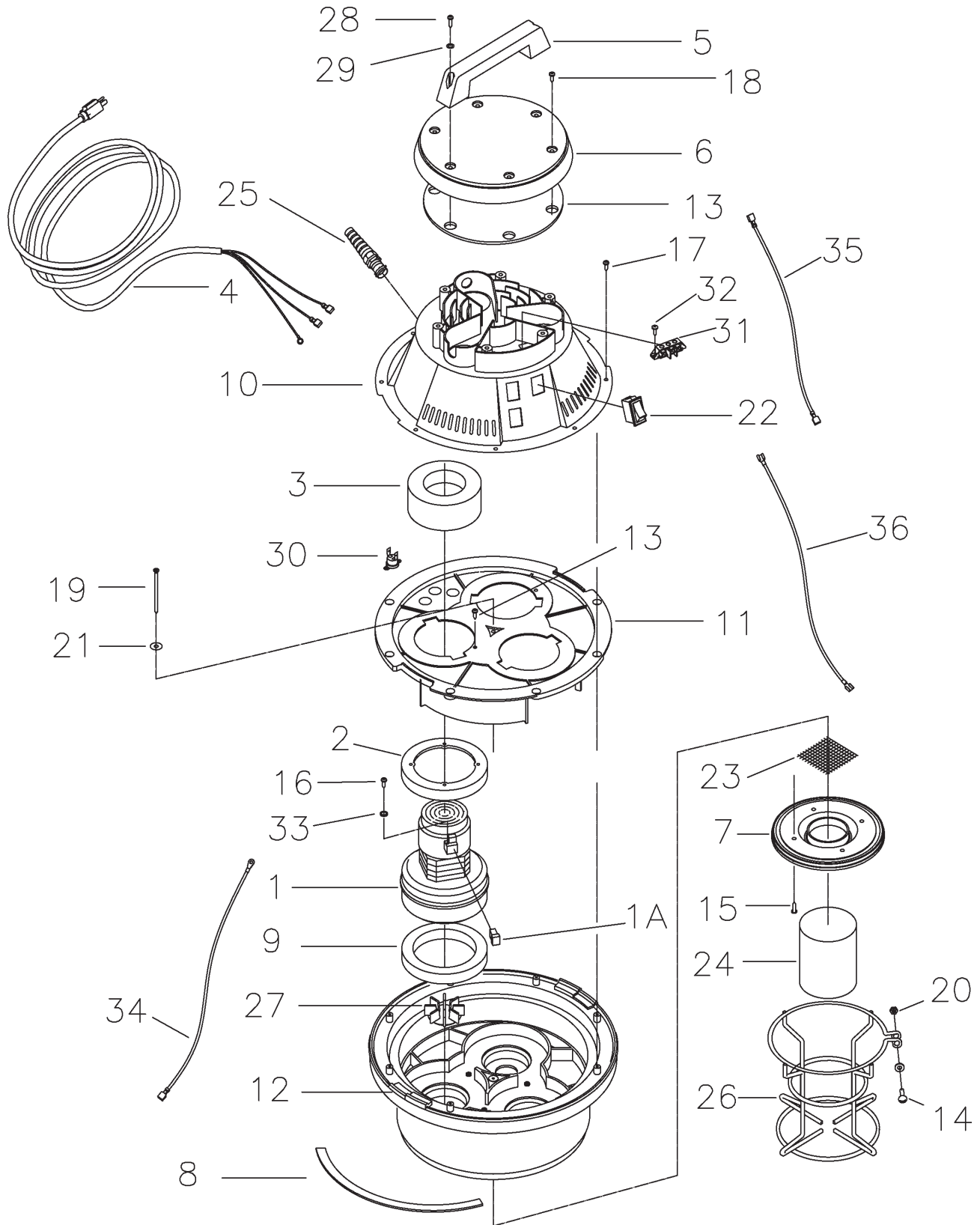
Lid Assembly - Twin Motor



Lid Assmby - Twin Motor BOM

Item	Part No.	Qty.	Description
1	290017	2	MOULDED VAC MOTOR GASKET (115V)
1A	380035	2	GASKET, 4.31 X 5.81 X.19 (230V)
2	290030	1	LID GASKET DIECUT 15G 290
3	380001-4	2	VAC MOTOR ECM 115V
3A	740149	2	VAC MOTOR 6296-13 230V
3B	380005	2	CARBON BRUSH REPLACEMENT (115V)
3C	380028	2	CARBON BRUSH REPLACEMENT (230V)
4	380064	2	RING, FOAM
5	381020	1	CORD-16GA-3 50FT MED GREY (115V)
5A	740600	1	CORD-EUR F3 G1.5MM 50FT (230V)
6	460000	1	HANDLE 460 LID BLACK
7	460003	1	LID COVER 460 BLACK
8	460009	2	VALVE VACUUM 460 BLACK
9	460011	1	FLOAT CAGE ADAPTER 460 BLK
10	460019	2	GASKET 3.75 X 5.75 X .75
11	460041	1	MOTOR HOLDOWN 5.7 X 2
12	460045	1	DOME SEAL GASKET 290
13	460071	1	MOTOR COVER NEW STYLE TWIN
14	460074	1	VACUUM HOUSING 460 BLACK
15	710182	1	SCR-MC 1/4-20 X 1.00 ZINC
16	711109	4	SCR-ST-B 12 X .50 ZINC
17	711124	4	SCR-ST-B 10 X .37 NI
18	711160	11	SCR-HI/LO #10 X 5/8 ZINC
19	711161	8	SCR-HI/LO #10 X 3/4 ZINC
20	711162	2	SCR-HI/LO #10 X 1 1/2 ZINC
21	711170	1	SCR #10 A POINT X 3.5
22	711425	1	NUT-FLANGED WIZZ 1/4-20
23	711553	2	WSR-INT LOCK #10
24	711584	1	WSR #10
25	712320	2	WSR .22 X .45 X .04 NYL
26	715086	1	DECAL-WARNING PV TO AVOID
27	740250	2	THERMODISC-290TWIN
28	740430	1	WIRE ASSY.
29	740431	1	WIRE ASSY.
30	740529	2	WIRE ASSY 16G BROWN 13.00"
31	750002	1	GROUND WIRE ASY YELLOW (115V)
31A	740116	1	WIRE ASSY 16G GRN/YEL 14.50" (230V)
32	807051	1	SCREEN SS 85/105
33	809754	2	SWITCH-ROCKER
34	830999	1	FLOAT ASY 3BLT
35	832241	3	RIVET-POP
36	833237	1	STRAIN RELIEF W/NUT
37	833454	1	FLOAT CAGE
***	290285	1	LID ASY TWIN 85 INJ 115V
***	290286	1	LID ASY COMP MOLDED 230V

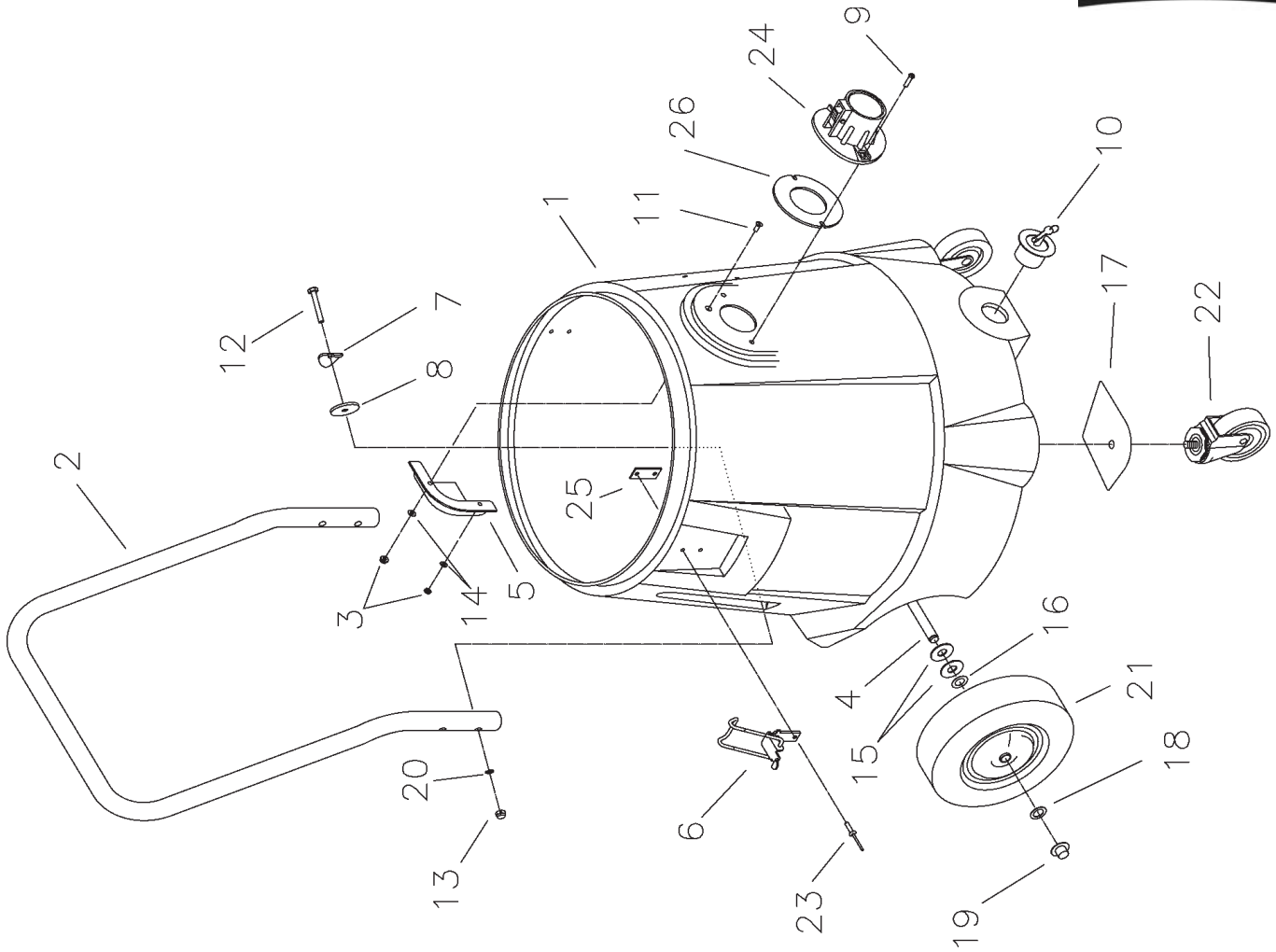
Lid Assembly - Three Motor



Lid Assembly - Three Motor BOM

Item	Part No.	Qty.	Description
1	740149	3	MOTOR-VAC 240V
1A	380028	2 EA	CARBON BRUSH Replacement
2	380035	3	GASKET, 4.31 X 5.81 X.19
3	380064	3	RING, FOAM
4	740600	1	CORD-EUROPEAN F3 G1.5MM 50FT BLACK
5	460000	1	HANDLE 460 LID BLACK
6	460003	1	LID COVER 460 BLACK
7	460011	1	FLOAT CAGE ADAPTER 460 BLK
8	290030	1	LID GASKET DIECUT 15G 290
9	460019	3	GASKET 3.75 X 5.75 X .75
10	460072	1	COVER-MOTOR CVR NEW STYLE THREE
11	830590	1	MOTOR HOLDOWN X 3
12	460075	1	MOTOR PAN ASY 3 MTR NEW
13	460045	1	DOME SEAL GASKET 290
14	710182	1	SCR-MC 1/4-20 X 1.00 ZINC
15	711109	4	SCR-ST-B 12 X .50 ZINC
16	711124	8	SCR-ST-B 10 X .37 NI
17	711160	3	SCR-HI/LO #10 X 5/8 ZINC
18	711161	4	SCR-HI/LO #10 X 3/4 ZINC
19	711170	1	SCR 10 A POINT X 3.5
20	711425	1	NUT-FLANGED WIZZ 1/4-20 STL ZP
21	711584	1	WSR #10
22	740711	3	SWITCH, ROCKER ON/OFF 2 NO 25A
23	807051	1	SCREEN SS 85/105
24	830999	1	FLOAT ASY 3BLT
25	833237	1	STRAIN RELIEF-W/NUT
26	833454	1	FLOAT CAGE
27	460009	3	VALVE VACUUM 460 BLACK
28	711162	2	SCR-HI/LO #10 X 1 1/2 ZINC
29	712320	2	WSR .20 X .45 X .048 NYL
30	740250	3	THERMODISC-290TWIN
31	832996	2	TERMINAL BLOCK-2POLE VDE
32	711104	2	SCR-ST-A 10 X .50
33	711553	6	WSR-INT LOCK #10
34	740419	1	14G GRN/YEL 13.00" B= 1
35	711104	2	SCR-ST-A 10 X .50
36	711553	6	WSR-INT LOCK #10
***	833000	1	LID ASY COMP 3MTR 230V

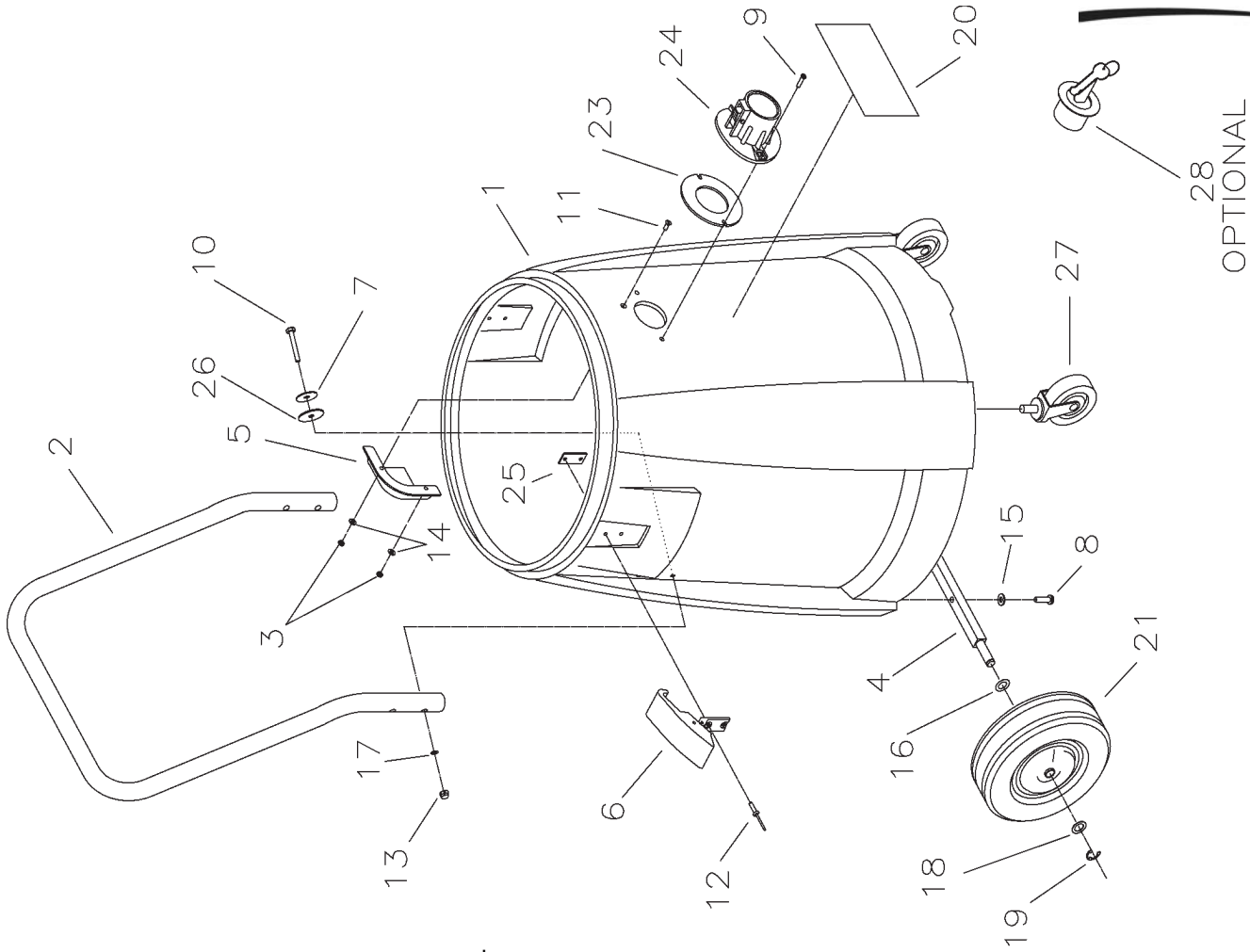
Tank Assembly - 15 Gallon



Bill of Material - 290040

Item	Part No.	Qty.	Description
1	280018	1	Tank 15GBM Burgundy
2	390031	1	Handle
3	712638	3	Nut Hex 10/24 SS Nyloc
4	390011	1	Axle
5	900035	1	Deflector, Intake
6	390035	2	Latch
7	712766	4	Curved Washer
8	828980	4	Gasket
9	712532	2	SCR-MC 10-24x1
10	833316	1	Drain Plug
11	712544	1	SCR-MC 10-24x3/4 SS FH
12	712541	4	SCR 1/4 -20 x 1.00 SS TH
13	711352	4	Nut-Acorn 1/4 -20
14	712764	3	Washer SS #10
15	711518	4	Flat Washer
16	711524	2	WSR-Wave .52 x .87 x .01
17	280017PLT	2	Backing Plate
18	711594	2	WSR-Flat
19	130032	2	Retainer
20	711444PLT	4	1/4 -20 Weldnut Plated
21	900008	2	Wheel
22	280016	2	Caster 3"
23	828894	4	Pop Rivet
24	390110	1	Intake Assembly
25	833831	2	Clamp Back Plate
26	390087	1	Gasket

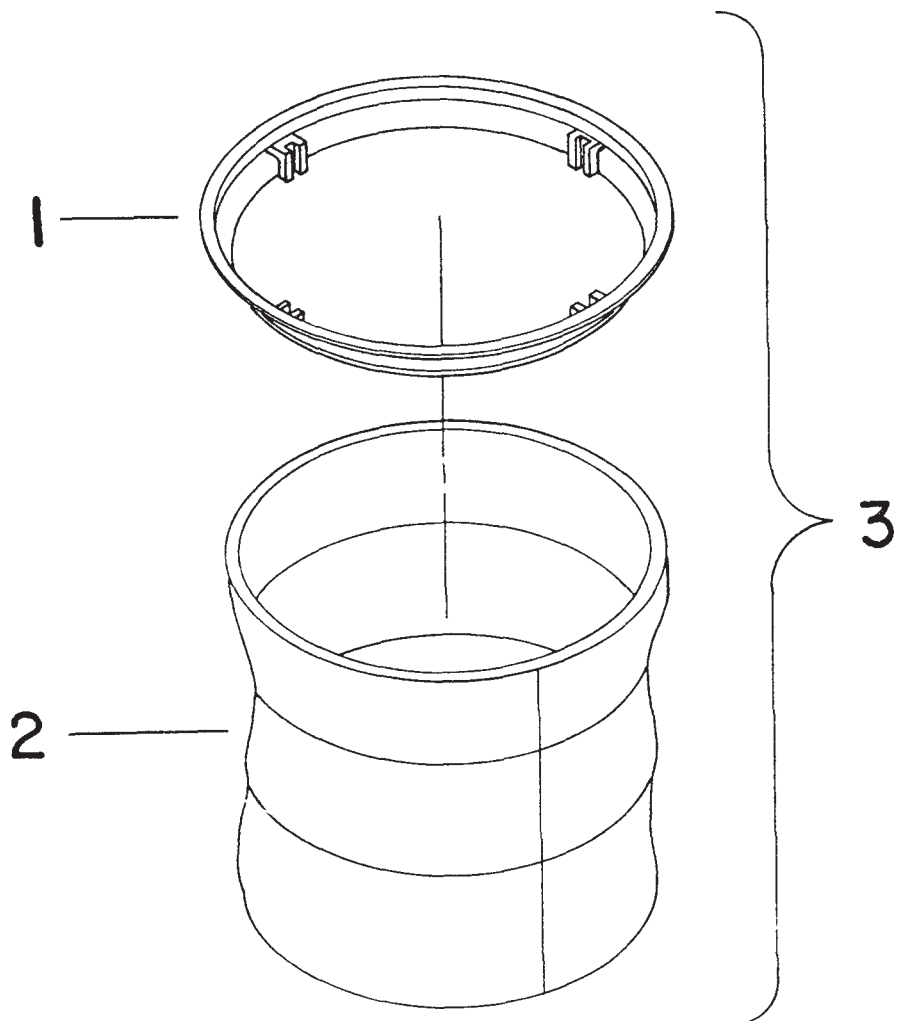
Tank Assembly - 20 Gallon



Bill of Material - 290020

Item	Part No.	Qty.	Description
1	290021	1	20 Gal Poly Tank MCH
2	390031	1	Handle Plt 390 Series
3	712638	1	Nut Hex 10/24 SS Nyloc
4	390033	1	Axle 390 Series Plated
5	900035	1	Deflector, Intake
6	460114	2	Latch, Poly Tank
7	712761	4	Flat Washer
8	710182	2	SCR-MC 1/4 -20 x 1.00 STPL
9	712532	2	SCR-MC 10-24x1 SS
10	712541	4	SCR 1/4 -20 x 1.00 SS TH
11	712544	1	SCR-MC 10-24x3/4 SS FH
12	828894	4	Pop Rivet
13	711352	4	Nut-Acorn 1/4 -20 ST
14	712764	3	Washer SS #10
15	711505	2	WSR-Flat 1/4
16	711524	2	WSR-Wave .52 x .87 x .01
17	711444PLT	4	1/4 -20 Weidnut Plated
18	711594	2	WSR-Flat .56 x .88 x .03
19	711713	2	Retaining Ring-E Ext. .50
20	715383	1	Decal MMAN 1x6.88 Lt Gry
21	900008	2	Wheel
22	828894	2	Pop Rivet
23	390087	1	Gasket, Diecut Poron Intake
24	390110	1	Intake Assembly Aluminum
25	833831	2	Clamp Back Plate
26	828980	4	Gasket
27	804457	2	Caster, 3" Black
28	833316	1	Drain Plug

28
OPTIONAL



Item	Part No.	Qty.	Description
1	760131	1	Molded Bag Ring
2	805054	1	Cloth Bag Only
3	805058	1	Cloth Bag Assy. Complete

Minuteman International Made Simple Commercial Limited Warranty



REVISION H
EFFECTIVE 05/30/2012

Minuteman International, Inc. warrants to the original purchaser/user that the product is free from defects in workmanship and materials under normal use. Minuteman will, at its option, repair or replace without charge, parts that fail under normal use and service when operated and maintained in accordance with the applicable operation and instruction manuals. All warranty claims must be submitted through and approved by factory authorized repair stations.

This warranty does not apply to normal wear, or to items whose life is dependent on their use and care, such as belts, cords, switches, hoses, rubber parts, electrical motor components or adjustments. Parts manufactured by Minuteman are covered by and subject to the warranties and/or guarantees of their manufacturers. Please contact Minuteman for procedures in warranty claims against these manufacturers.

Special warning to purchaser — Use of replacement filters and/or prefilters not manufactured by Minuteman or its designated licensees, will void all warranties expressed or implied. A potential health hazard exists without original equipment replacement.

All warranted items become the sole property of Minuteman or its original manufacturer, whichever the case may be.

Minuteman disclaims any implied warranty, including the warranty of merchantability and the warranty of fitness for a particular purpose. Minuteman assumes no responsibility for any special, incidental or consequential damages.

This limited warranty is applicable only in the U.S.A. and Canada, and is extended only to the original user/purchaser of this product. Customers outside the U.S.A. and Canada should contact their local distributor for export warranty policies. Minuteman is not responsible for costs or repairs performed by persons other than those specifically authorized by Minuteman. This warranty does not apply to damage from transportation, alterations by unauthorized persons, misuse or abuse of the equipment, use of non-compatible chemicals, or damage to property, or loss of income due to malfunctions of the product.

If a difficulty develops with this machine, you should contact the dealer from whom it was purchased.

This warranty gives you specific legal rights, and you may have other rights which vary from state to state. Some states do not allow the exclusion or limitation of special, incidental or consequential damages, or limitations on how long an implied warranty lasts, so the above exclusions and limitations may not apply to you.

Cord Electric Group: Three years parts, two years labor, ninety days travel (Not to exceed two hours)

Exceptions.....

<u>Model</u>	<u>Parts</u>	<u>Labor</u>	<u>Poly</u>	<u>Travel</u>
Port A Scrub	1 yr	6 months	10 yrs	0
MPV 13	1 yr	0	0	0
MPV 14 & 18	2 yrs	1 yr	0	0
Phenom Upright Vacuums	1 yr	1yr	0	0
Rapid Air Blower	1 yr	1 yr	10 yrs	0
Explosion Proof Vacuum	1 yr	1 yr	0	0
C-BOX 100, H-BOX 200 & TRS 14	1 yr	1 yr	10 yrs	0
E17 & E20 Electric Scrubbers	1 yr	6 months	10 yrs	0
Pneumatic Vacuums	3 yr	1 yr	0	0
<u>Description</u>	<u>Parts</u>	<u>Labor</u>	<u>Poly</u>	<u>Travel</u>
Battery Operated Group	3 yrs	2 yrs	10	90 days
Sweepers	1 yr	1 yr	10	90 days
Internal Combustion Group	1 yr	1 yr	10	90 days
Exception: PAS 14B	1 yr	1 yr	10 yr	0 Not to exceed two hours

Battery Chargers: One year replacement
Replacement: Parts: Ninety days
Batteries: 0-3 months replacement, 4-12 months pro-rate
Polyethylene Plastic Tanks: Tanks have 10yr warranty, no additional labor